

Anti-PTPRN2 antibody (180-260 Internal) (STJ95264)

STJ95264

GENERAL INFORMATION

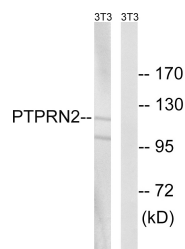
Product Type	Primary antibodies
Short Description	Rabbit polyclonal antibody anti-Receptor-Type Tyrosine-Protein Phosphatase N2 (180-260 Internal) is suitable for use in Western Blot and ELISA research applications.
Applications	WB, ELISA
Host/Source	Rabbit
Reactivity	Human, Mouse, Rat

PRODUCT PROPERTIES

Clonality	Polyclonal
Clone ID	
Concentration	1 mg/mL
Conjugation	Unconjugated
Purification	The antibody was affinity-purified from rabbit anti-serum by affinity-chromatography.
Dilution Range	WB 1:500-1:2000 ELISA 1:10000
Formulation	PBS, 50% Glycerol, 0.5% BSA and 0.02% Sodium Azide.
Isotype	IgG
Storage	Store at -20°C for up to 1 year from the date of receipt, and avoid repeat freeze-thaw cycles.
Instruction	

TARGET INFORMATION

Gene ID	5799
Gene Symbol	PTPRN2
Uniprot ID	PTPR2_HUMAN
Immunogen	The antiserum was produced against synthesized peptide derived from human PTPRN2 at amino acid range 206-255
Immunogen Region	180-260 Internal
Specificity	PTPRN2 polyclonal antibody (Receptor-Type Tyrosine-Protein Phosphatase N2) binds to endogenous Receptor-Type Tyrosine-Protein Phosphatase N2 at the amino acid region 180-260 Internal.
Immunogen Sequence	



Western blot analysis of lysates from NIH/3T3 cells, using PTPRN2 Antibody. The lane on the right is blocked with the synthesized peptide.