

Anti-PTGR2 antibody (150-230 Internal) (STJ95261)

STJ95261

GENERAL INFORMATION

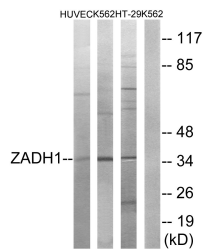
Product Type	Primary antibodies
Short Description	Rabbit polyclonal antibody anti-Prostaglandin Reductase 2 (150-230 Internal) is suitable for use in Western Blot, Immunohistochemistry, Immunofluorescence and ELISA research applications.
Applications	WB, IHC-P, IF-P, ELISA
Host/Source	Rabbit
Reactivity	Human, Rat, Mouse

PRODUCT PROPERTIES

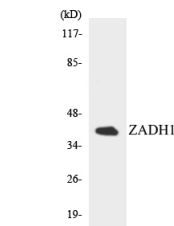
Clonality	Polyclonal
Clone ID	
Concentration	1 mg/mL
Conjugation	Unconjugated
Purification	The antibody was affinity-purified from rabbit anti-serum by affinity-chromatography.
Dilution Range	WB 1:500-1:2000 IHC 1:100-1:300 ELISA 1:10000
Formulation	PBS, 50% Glycerol, 0.5% BSA and 0.02% Sodium Azide.
Isotype	IgG
Storage Instruction	Store at -20°C for up to 1 year from the date of receipt, and avoid repeat freeze-thaw cycles.

TARGET INFORMATION

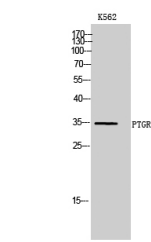
Gene ID	145482
Gene Symbol	PTGR2
Uniprot ID	PTGR2_HUMAN
Immunogen	The antiserum was produced against synthesized peptide derived from human ZADH1 at amino acid range 181-230
Immunogen Region	150-230 Internal
Specificity	PTGR2 polyclonal antibody (Prostaglandin Reductase 2) binds to endogenous Prostaglandin Reductase 2 at the amino acid region 150-230 Internal.
Immunogen Sequence	



Western blot analysis of lysates from K562, HUVEC, and HT-29 cells, using ZADH1 Antibody. The lane on the right is blocked with the synthesized peptide.



Western blot analysis of the lysates from HepG2 cells using ZADH1 antibody.



Western blot analysis of K562 cells using PTGR2 Polyclonal Antibody.