

Anti-PSMD2 antibody (70-150 N-Term) (STJ95253)

STJ95253

GENERAL INFORMATION

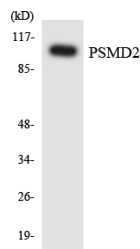
| | |
|--------------------------|---|
| Product Type | Primary antibodies |
| Short Description | Rabbit polyclonal antibody anti-26s Proteasome Non-Atpase Regulatory Subunit 2 (70-150 N-Term) is suitable for use in Western Blot, Immunohistochemistry, Immunofluorescence and ELISA research applications. |
| Applications | WB, IHC-P, IF-P, ELISA |
| Host/Source | Rabbit |
| Reactivity | Human, Mouse, Rat |

PRODUCT PROPERTIES

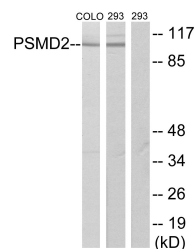
| | |
|----------------------------|--|
| Clonality | Polyclonal |
| Clone ID | |
| Concentration | 1 mg/mL |
| Conjugation | Unconjugated |
| Purification | The antibody was affinity-purified from rabbit anti-serum by affinity-chromatography. |
| Dilution Range | WB 1:500-1:2000 IHC 1:100-1:300 ELISA 1:20000 |
| Formulation | PBS, 50% Glycerol, 0.5% BSA and 0.02% Sodium Azide. |
| Isotype | IgG |
| Storage Instruction | Store at -20°C for up to 1 year from the date of receipt, and avoid repeat freeze-thaw cycles. |

TARGET INFORMATION

| | |
|---------------------------|---|
| Gene ID | 5708 |
| Gene Symbol | PSMD2 |
| Uniprot ID | PSMD2_HUMAN |
| Immunogen | The antiserum was produced against synthesized peptide derived from human PSMD2 at amino acid range 101-150 |
| Immunogen Region | 70-150 N-Term |
| Specificity | PSMD2 polyclonal antibody (26s Proteasome Non-Atpase Regulatory Subunit 2) binds to endogenous 26s Proteasome Non-Atpase Regulatory Subunit 2 at the amino acid region 70-150 N-Term. |
| Immunogen Sequence | |



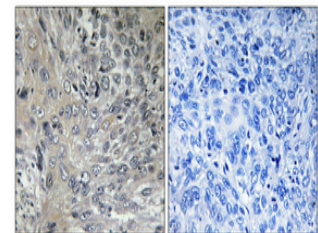
Western blot analysis of the lysates from HepG2 cells using PSMD2 antibody.



Western blot analysis of lysates from COLO205 and 293 cells, using PSMD2 Antibody. The lane on the right is blocked with the synthesized peptide.



Western blot analysis of 293 cells using PSMD2 Polyclonal Antibody



Immunohistochemical analysis of paraffin-embedded Human cervix cancer. Antibody was diluted at 1:100 (4°C overnight). High-pressure and temperature Tris-EDTA, pH8.0 was used for antigen retrieval. Negative control (right) obtained from antibody was pre-absorbed by immunogen peptide.

This product is suitable for in-vitro studies under the RESEARCH USE ONLY [RUO] licence. This product must not be used as for diagnostic or other medical purposes.
St John's Laboratory Ltd, Knowledge Dock Business Centre, University Way, London, E16 2RD | Tel: 0208 223 3081