

Anti-PSMD12 antibody (120-200 Internal) (STJ95252)

STJ95252

GENERAL INFORMATION

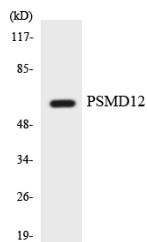
Product Type	Primary antibodies
Short Description	Rabbit polyclonal antibody anti-26s Proteasome Non-Atpase Regulatory Subunit 12 (120-200 Internal) is suitable for use in Western Blot, Immunohistochemistry, Immunofluorescence and ELISA research applications.
Applications	WB, IHC-P, IF-P, ELISA
Host/Source	Rabbit
Reactivity	Human, Mouse, Rat

PRODUCT PROPERTIES

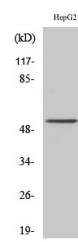
Clonality	Polyclonal
Clone ID	
Concentration	1 mg/mL
Conjugation	Unconjugated
Purification	The antibody was affinity-purified from rabbit anti-serum by affinity-chromatography.
Dilution Range	WB 1:500-1:2000 IHC 1:100-1:300 ELISA 1:40000
Formulation	PBS, 50% Glycerol, 0.5% BSA and 0.02% Sodium Azide.
Isotype	IgG
Storage Instruction	Store at -20°C for up to 1 year from the date of receipt, and avoid repeat freeze-thaw cycles.

TARGET INFORMATION

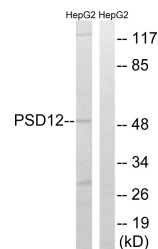
Gene ID	5718
Gene Symbol	PSMD12
Uniprot ID	PSD12_HUMAN
Immunogen	The antiserum was produced against synthesized peptide derived from human PSMD12 at amino acid range 151-200
Immunogen Region	120-200 Internal
Specificity	PSMD12 polyclonal antibody (26s Proteasome Non-Atpase Regulatory Subunit 12) binds to endogenous 26s Proteasome Non-Atpase Regulatory Subunit 12 at the amino acid region 120-200 Internal.
Immunogen Sequence	



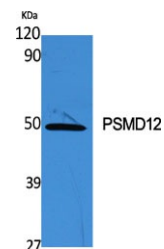
Western blot analysis of the lysates from HT-29 cells using PSMD12 antibody.



Western blot analysis of HepG2 cells using PSMD12 Polyclonal Antibody



Western blot analysis of lysates from HepG2 cells, using PSMD12 Antibody. The lane on the right is blocked with the synthesized peptide.



Western blot analysis of various cells using PSMD12 Polyclonal Antibody

This product is suitable for in-vitro studies under the RESEARCH USE ONLY [RUO] licence. This product must not be used as for diagnostic or other medical purposes.
St John's Laboratory Ltd, Knowledge Dock Business Centre, University Way, London, E16 2RD | Tel: 0208 223 3081