

Anti-PSMD11 antibody (240-320 Internal) (STJ95251)

STJ95251

GENERAL INFORMATION

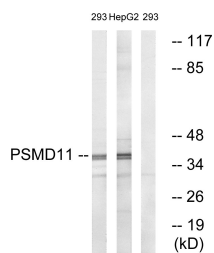
Product Type	Primary antibodies
Short Description	Rabbit polyclonal antibody anti-26s Proteasome Non-Atpase Regulatory Subunit 11 (240-320 Internal) is suitable for use in Western Blot, Immunohistochemistry, Immunofluorescence and ELISA research applications.
Applications	WB, IHC-P, IF-P, ELISA
Host/Source	Rabbit
Reactivity	Human, Mouse

PRODUCT PROPERTIES

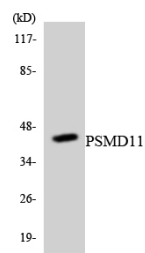
Clonality	Polyclonal
Clone ID	
Concentration	1 mg/mL
Conjugation	Unconjugated
Purification	The antibody was affinity-purified from rabbit anti-serum by affinity-chromatography.
Dilution Range	WB 1:500-1:2000 IHC 1:100-1:300 ELISA 1:10000
Formulation	PBS, 50% Glycerol, 0.5% BSA and 0.02% Sodium Azide.
Isotype	IgG
Storage Instruction	Store at -20°C for up to 1 year from the date of receipt, and avoid repeat freeze-thaw cycles.

TARGET INFORMATION

Gene ID	5717
Gene Symbol	PSMD11
Uniprot ID	PSD11_HUMAN
Immunogen	The antiserum was produced against synthesized peptide derived from human PSMD11 at amino acid range 271-320
Immunogen Region	240-320 Internal
Specificity	PSMD11 polyclonal antibody (26s Proteasome Non-Atpase Regulatory Subunit 11) binds to endogenous 26s Proteasome Non-Atpase Regulatory Subunit 11 at the amino acid region 240-320 Internal.
Immunogen Sequence	



Western blot analysis of lysates from 293 and HepG2 cells, using PSMD11 Antibody. The lane on the right is blocked with the synthesized peptide.



Western blot analysis of the lysates from RAW264.7 cells using PSMD11 antibody.



Western blot analysis of various cells using PSMD11 Polyclonal Antibody

This product is suitable for in-vitro studies under the RESEARCH USE ONLY [RUO] licence. This product must not be used as for diagnostic or other medical purposes.
St John's Laboratory Ltd, Knowledge Dock Business Centre, University Way, London, E16 2RD | Tel: 0208 223 3081