

Anti-PSMC6 antibody (30-110 Internal) (STJ95250)

STJ95250

GENERAL INFORMATION

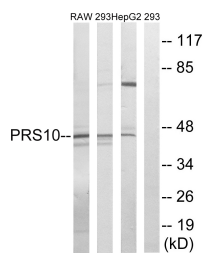
Product Type	Primary antibodies
Short Description	Rabbit polyclonal antibody anti-26s Proteasome Regulatory Subunit 10b (30-110 Internal) is suitable for use in Western Blot and ELISA research applications.
Applications	WB, ELISA
Host/Source	Rabbit
Reactivity	Human, Mouse

PRODUCT PROPERTIES

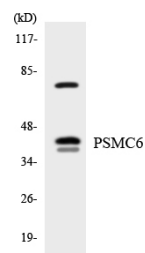
Clonality	Polyclonal
Clone ID	
Concentration	1 mg/mL
Conjugation	Unconjugated
Purification	The antibody was affinity-purified from rabbit anti-serum by affinity-chromatography.
Dilution Range	WB 1:500-1:2000 ELISA 1:40000
Formulation	PBS, 50% Glycerol, 0.5% BSA and 0.02% Sodium Azide.
Isotype	IgG
Storage	Store at -20°C for up to 1 year from the date of receipt, and avoid repeat freeze-thaw cycles.
Instruction	

TARGET INFORMATION

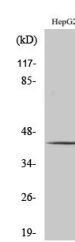
Gene ID	5706
Gene Symbol	PSMC6
Uniprot ID	PRS10_HUMAN
Immunogen	The antiserum was produced against synthesized peptide derived from human PSMC6 at amino acid range 61-110
Immunogen Region	30-110 Internal
Specificity	PSMC6 polyclonal antibody (26s Proteasome Regulatory Subunit 10b) binds to endogenous 26s Proteasome Regulatory Subunit 10b at the amino acid region 30-110 Internal.
Immunogen Sequence	



Western blot analysis of lysates from HepG2, 293, and RAW264.7 cells, using PSMC6 Antibody. The lane on the right is blocked with the synthesized peptide.



Western blot analysis of the lysates from HeLa cells using PSMC6 antibody.



Western blot analysis of various cells using PSMC6 Polyclonal Antibody.