

Anti-PSMC3 antibody (240-320 Internal) (STJ95249)

STJ95249

GENERAL INFORMATION

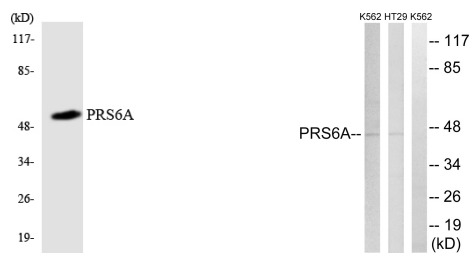
Product Type	Primary antibodies
Short Description	Rabbit polyclonal antibody anti-26s Proteasome Regulatory Subunit 6a (240-320 Internal) is suitable for use in Western Blot, Immunohistochemistry, Immunofluorescence and ELISA research applications.
Applications	WB, IHC-P, IF-P, ELISA
Host/Source	Rabbit
Reactivity	Human, Mouse, Rat

PRODUCT PROPERTIES

Clonality	Polyclonal
Clone ID	
Concentration	1 mg/mL
Conjugation	Unconjugated
Purification	The antibody was affinity-purified from rabbit anti-serum by affinity-chromatography.
Dilution Range	WB 1:500-1:2000 IHC 1:100-1:300 ELISA 1:40000
Formulation	PBS, 50% Glycerol, 0.5% BSA and 0.02% Sodium Azide.
Isotype	IgG
Storage Instruction	Store at -20°C for up to 1 year from the date of receipt, and avoid repeat freeze-thaw cycles.

TARGET INFORMATION

Gene ID	5702
Gene Symbol	PSMC3
Uniprot ID	PRS6A_HUMAN
Immunogen	The antiserum was produced against synthesized peptide derived from human PRS6A at amino acid range 271-320
Immunogen Region	240-320 Internal
Specificity	PSMC3 polyclonal antibody (26s Proteasome Regulatory Subunit 6a) binds to endogenous 26s Proteasome Regulatory Subunit 6a at the amino acid region 240-320 Internal.
Immunogen Sequence	



Western blot analysis of the lysates from HT-29 cells using PRS6A antibody.

Western blot analysis of lysates from K562 and HT-29 cells, using PRS6A Antibody. The lane on the right is blocked with the synthesized peptide.

This product is suitable for in-vitro studies under the RESEARCH USE ONLY [RUO] licence. This product must not be used as for diagnostic or other medical purposes.
St John's Laboratory Ltd, Knowledge Dock Business Centre, University Way, London, E16 2RD | Tel: 0208 223 3081