

## Anti-OR51E2 antibody (190-270 C-Term) (STJ95246)

STJ95246

### GENERAL INFORMATION

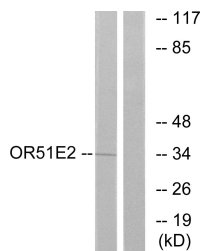
<b>Product Type</b>	Primary antibodies
<b>Short Description</b>	Rabbit polyclonal antibody anti-Olfactory Receptor 51e2 (190-270 C-Term) is suitable for use in Western Blot, Immunofluorescence, Immunocytochemistry and ELISA research applications.
<b>Applications</b>	WB, IF, ICC, ELISA
<b>Host/Source</b>	Rabbit
<b>Reactivity</b>	Human, Rat

### PRODUCT PROPERTIES

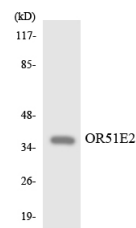
<b>Clonality</b>	Polyclonal
<b>Clone ID</b>	
<b>Concentration</b>	1 mg/mL
<b>Conjugation</b>	Unconjugated
<b>Purification</b>	The antibody was affinity-purified from rabbit anti-serum by affinity-chromatography.
<b>Dilution Range</b>	WB 1:500-1:2000 IF 1:200-1:1000 ELISA 1:10000
<b>Formulation</b>	PBS, 50% Glycerol, 0.5% BSA and 0.02% Sodium Azide.
<b>Isotype</b>	IgG
<b>Storage Instruction</b>	Store at -20°C for up to 1 year from the date of receipt, and avoid repeat freeze-thaw cycles.

### TARGET INFORMATION

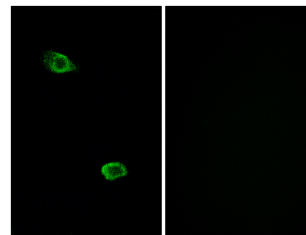
<b>Gene ID</b>	81285
<b>Gene Symbol</b>	OR51E2
<b>Uniprot ID</b>	O51E2_HUMAN
<b>Immunogen</b>	The antiserum was produced against synthesized peptide derived from human OR51E2 at amino acid range 221-270
<b>Immunogen Region</b>	190-270 C-Term
<b>Specificity</b>	OR51E2 polyclonal antibody (Olfactory Receptor 51e2) binds to endogenous Olfactory Receptor 51e2 at the amino acid region 190-270 C-Term.
<b>Immunogen Sequence</b>	



Western blot analysis of lysates from Jurkat cells, using OR51E2 Antibody. The lane on the right is blocked with the synthesized peptide.



Western blot analysis of the lysates from HepG2 cells using OR51E2 antibody.



Immunofluorescence analysis of A549 cells, using OR51E2 Antibody. The picture on the right is blocked with the synthesized peptide.