

Anti-DLG2 antibody (570-650 Internal) (STJ95243)

STJ95243

GENERAL INFORMATION

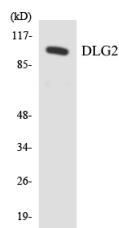
Product Type	Primary antibodies
Short Description	Rabbit polyclonal antibody anti-Disks Large Homolog 2 (570-650 Internal) is suitable for use in Western Blot, Immunohistochemistry, Immunofluorescence and ELISA research applications.
Applications	WB, IHC-P, IF-P, ELISA
Host/Source	Rabbit
Reactivity	Human, Rat, Mouse

PRODUCT PROPERTIES

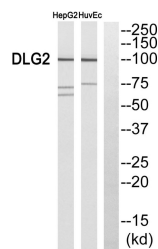
Clonality	Polyclonal
Clone ID	
Concentration	1 mg/mL
Conjugation	Unconjugated
Purification	The antibody was affinity-purified from rabbit anti-serum by affinity-chromatography.
Dilution Range	WB 1:500-1:2000 IHC 1:100-1:300 ELISA 1:40000
Formulation	PBS, 50% Glycerol, 0.5% BSA and 0.02% Sodium Azide.
Isotype	IgG
Storage Instruction	Store at -20°C for up to 1 year from the date of receipt, and avoid repeat freeze-thaw cycles.

TARGET INFORMATION

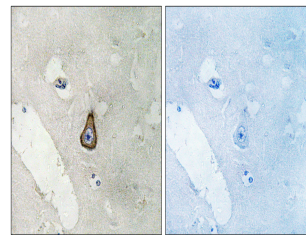
Gene ID	1740
Gene Symbol	DLG2
Uniprot ID	DLG2_HUMAN
Immunogen	The antiserum was produced against synthesized peptide derived from human DLG2 at amino acid range 601-650
Immunogen Region	570-650 Internal
Specificity	DLG2 polyclonal antibody (Disks Large Homolog 2) binds to endogenous Disks Large Homolog 2 at the amino acid region 570-650 Internal.
Immunogen Sequence	



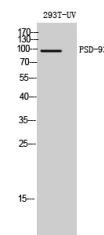
Western blot analysis of the lysates from HeLa cells using DLG2 antibody.



Western blot analysis of DLG2 Antibody. The lane on the right is blocked with the DLG2 peptide.



Immunohistochemistry analysis of paraffin-embedded human brain, using DLG2 Antibody. The lane on the right is blocked with the DLG2 peptide.



Western blot analysis of 293T-UV cells using PSD-93 Polyclonal Antibody diluted at 1: 1000

This product is suitable for in-vitro studies under the RESEARCH USE ONLY [RUO] licence. This product must not be used as for diagnostic or other medical purposes.
St John's Laboratory Ltd, Knowledge Dock Business Centre, University Way, London, E16 2RD | Tel: 0208 223 3081