

Anti-PRPH antibody (390-470 C-Term) (STJ95235)

STJ95235

GENERAL INFORMATION

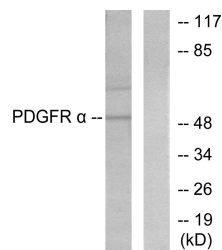
Product Type	Primary antibodies
Short Description	Rabbit polyclonal antibody anti-Peripherin (390-470 C-Term) is suitable for use in Western Blot, Immunohistochemistry, Immunofluorescence and ELISA research applications.
Applications	WB, IHC-P, IF-P, ELISA
Host/Source	Rabbit
Reactivity	Human, Rat

PRODUCT PROPERTIES

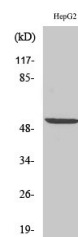
Clonality	Polyclonal
Clone ID	
Concentration	1 mg/mL
Conjugation	Unconjugated
Purification	The antibody was affinity-purified from rabbit anti-serum by affinity-chromatography.
Dilution Range	WB 1:500-1:2000 IHC 1:100-1:300 ELISA 1:20000
Formulation	PBS, 50% Glycerol, 0.5% BSA and 0.02% Sodium Azide.
Isotype	IgG
Storage Instruction	Store at -20°C for up to 1 year from the date of receipt, and avoid repeat freeze-thaw cycles.

TARGET INFORMATION

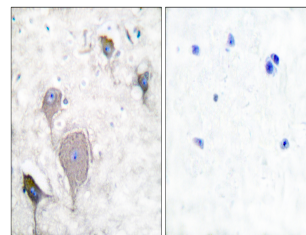
Gene ID	5630
Gene Symbol	PRPH
Uniprot ID	PERI_HUMAN
Immunogen	The antiserum was produced against synthesized peptide derived from human Peripherin at amino acid range 421-470
Immunogen Region	390-470 C-Term
Specificity	PRPH polyclonal antibody (Peripherin) binds to endogenous Peripherin at the amino acid region 390-470 C-Term.
Immunogen Sequence	



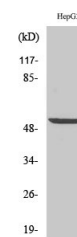
Western blot analysis of lysates from HepG2 cells, using Peripherin Antibody. The lane on the right is blocked with the synthesized peptide.



Western blot analysis of HepG2 cells using PRPH Polyclonal Antibody diluted at 1: 1000



Immunohistochemistry analysis of paraffin-embedded human brain tissue, using Peripherin Antibody. The picture on the right is blocked with the synthesized peptide.



Western blot analysis of various cells using PRPH Polyclonal Antibody diluted at 1: 1000