

Anti-PRPF38A antibody (80-160 Internal) (STJ95233)

STJ95233

GENERAL INFORMATION

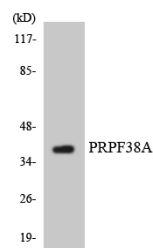
Product Type	Primary antibodies
Short Description	Rabbit polyclonal antibody anti-Pre-Mrna-Splicing Factor 38a (80-160 Internal) is suitable for use in Western Blot, Immunohistochemistry, Immunofluorescence and ELISA research applications.
Applications	WB, IHC-P, IF-P, ELISA
Host/Source	Rabbit
Reactivity	Human, Mouse

PRODUCT PROPERTIES

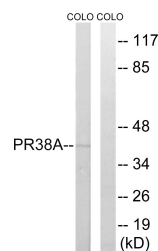
Clonality	Polyclonal
Clone ID	
Concentration	1 mg/mL
Conjugation	Unconjugated
Purification	The antibody was affinity-purified from rabbit anti-serum by affinity-chromatography.
Dilution Range	WB 1:500-1:2000 IHC 1:100-1:300 ELISA 1:20000
Formulation	PBS, 50% Glycerol, 0.5% BSA and 0.02% Sodium Azide.
Isotype	IgG
Storage Instruction	Store at -20°C for up to 1 year from the date of receipt, and avoid repeat freeze-thaw cycles.

TARGET INFORMATION

Gene ID	84950
Gene Symbol	PRPF38A
Uniprot ID	PR38A_HUMAN
Immunogen	The antiserum was produced against synthesized peptide derived from human PRPF38A at amino acid range 104-153
Immunogen Region	80-160 Internal
Specificity	PRPF38A polyclonal antibody (Pre-Mrna-Splicing Factor 38a) binds to endogenous Pre-Mrna-Splicing Factor 38a at the amino acid region 80-160 Internal.
Immunogen Sequence	



Western blot analysis of the lysates from HUVEC cells using PRPF38A antibody.



Western blot analysis of lysates from COLO cells, using PRPF38A Antibody. The lane on the right is blocked with the synthesized peptide.

This product is suitable for in-vitro studies under the RESEARCH USE ONLY [RUO] licence. This product must not be used as for diagnostic or other medical purposes.
St John's Laboratory Ltd, Knowledge Dock Business Centre, University Way, London, E16 2RD | Tel: 0208 223 3081