

Anti-PRPF31 antibody (300-380 Internal) (STJ95232)

STJ95232

GENERAL INFORMATION

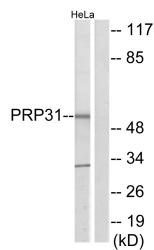
Product Type	Primary antibodies
Short Description	Rabbit polyclonal antibody anti-U4/U6 Small Nuclear Ribonucleoprotein Prp31 (300-380 Internal) is suitable for use in Western Blot and ELISA research applications.
Applications	WB, ELISA
Host/Source	Rabbit
Reactivity	Human, Mouse

PRODUCT PROPERTIES

Clonality	Polyclonal
Clone ID	
Concentration	1 mg/mL
Conjugation	Unconjugated
Purification	The antibody was affinity-purified from rabbit anti-serum by affinity-chromatography.
Dilution Range	WB 1:500-1:2000 ELISA 1:10000
Formulation	PBS, 50% Glycerol, 0.5% BSA and 0.02% Sodium Azide.
Isotype	IgG
Storage Instruction	Store at -20°C for up to 1 year from the date of receipt, and avoid repeat freeze-thaw cycles.

TARGET INFORMATION

Gene ID	26121
Gene Symbol	PRPF31
Uniprot ID	PRP31_HUMAN
Immunogen	The antiserum was produced against synthesized peptide derived from human PRP31 at amino acid range 331-380
Immunogen Region	300-380 Internal
Specificity	PRPF31 polyclonal antibody (U4/U6 Small Nuclear Ribonucleoprotein Prp31) binds to endogenous U4/U6 Small Nuclear Ribonucleoprotein Prp31 at the amino acid region 300-380 Internal.
Immunogen Sequence	



Western blot analysis of lysates from HeLa cells, using PRP31 Antibody. The lane on the right is blocked with the synthesized peptide.