

Anti-PRPF18 antibody (160-240 Internal) (STJ95231)

STJ95231

GENERAL INFORMATION

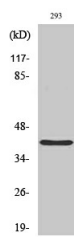
Product Type	Primary antibodies
Short Description	Rabbit polyclonal antibody anti-Pre-Mrna-Splicing Factor 18 (160-240 Internal) is suitable for use in Western Blot and ELISA research applications.
Applications	WB, ELISA
Host/Source	Rabbit
Reactivity	Human, Mouse, Rat

PRODUCT PROPERTIES

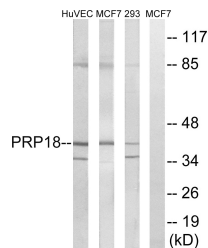
Clonality	Polyclonal
Clone ID	
Concentration	1 mg/mL
Conjugation	Unconjugated
Purification	The antibody was affinity-purified from rabbit anti-serum by affinity-chromatography.
Dilution Range	WB 1:500-1:2000 ELISA 1:5000
Formulation	PBS, 50% Glycerol, 0.5% BSA and 0.02% Sodium Azide.
Isotype	IgG
Storage Instruction	Store at -20°C for up to 1 year from the date of receipt, and avoid repeat freeze-thaw cycles.

TARGET INFORMATION

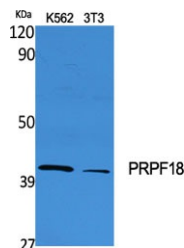
Gene ID	8559
Gene Symbol	PRPF18
Uniprot ID	PRP18_HUMAN
Immunogen	The antiserum was produced against synthesized peptide derived from human PRPF18 at amino acid range 182-231
Immunogen Region	160-240 Internal
Specificity	PRPF18 polyclonal antibody (Pre-Mrna-Splicing Factor 18) binds to endogenous Pre-Mrna-Splicing Factor 18 at the amino acid region 160-240 Internal.
Immunogen Sequence	



Western blot analysis of HuVEC cells using PRPF18 Polyclonal Antibody diluted at 1: 500 cells nucleus extracted by Minute™ Cytoplasmic and Nuclear Fractionation kit (SC-003, Inventibiotech, MN, USA).



Western blot analysis of lysates from 293, MCF-7, and HUVEC cells, using PRPF18 Antibody. The lane on the right is blocked with the synthesized peptide.



Western blot analysis of various cells using PRPF18 Polyclonal Antibody diluted at 1: 500 cells nucleus extracted by Minute™ Cytoplasmic and Nuclear Fractionation kit (SC-003, Inventibiotech, MN, USA).

This product is suitable for in-vitro studies under the RESEARCH USE ONLY [RUO] licence. This product must not be used as for diagnostic or other medical purposes.
St John's Laboratory Ltd, Knowledge Dock Business Centre, University Way, London, E16 2RD | Tel: 0208 223 3081