

Anti-PRPF6 antibody (720-800 C-Term) (STJ95230)

STJ95230

GENERAL INFORMATION

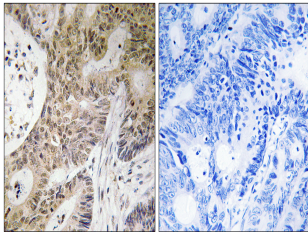
Product Type	Primary antibodies
Short Description	Rabbit polyclonal antibody anti-Pre-Mrna-Processing Factor 6 (720-800 C-Term) is suitable for use in Immunohistochemistry, Immunofluorescence, Western Blot and ELISA research applications.
Applications	IHC-P, IF-P, WB, ELISA
Host/Source	Rabbit
Reactivity	Human, Mouse, Rat

PRODUCT PROPERTIES

Clonality	Polyclonal
Clone ID	
Concentration	1 mg/mL
Conjugation	Unconjugated
Purification	The antibody was affinity-purified from rabbit anti-serum by affinity-chromatography.
Dilution Range	WB 1:500-2000 IHC 1:100-1:300 ELISA 1:10000
Formulation	PBS, 50% Glycerol, 0.5% BSA and 0.02% Sodium Azide.
Isotype	IgG
Storage Instruction	Store at -20°C for up to 1 year from the date of receipt, and avoid repeat freeze-thaw cycles.

TARGET INFORMATION

Gene ID	24148
Gene Symbol	PRPF6
Uniprot ID	PRPF6_HUMAN
Immunogen	The antiserum was produced against synthesized peptide derived from human PRPF6 at amino acid range 747-796
Immunogen Region	720-800 C-Term
Specificity	PRPF6 polyclonal antibody (Pre-Mrna-Processing Factor 6) binds to endogenous Pre-Mrna-Processing Factor 6 at the amino acid region 720-800 C-Term.
Immunogen Sequence	



Immunohistochemistry analysis of paraffin-embedded human colon carcinoma tissue, using PRPF6 Antibody. The picture on the right is blocked with the synthesized peptide.