

Anti-PRKY antibody (30-110 Internal) (STJ95225)

STJ95225

GENERAL INFORMATION

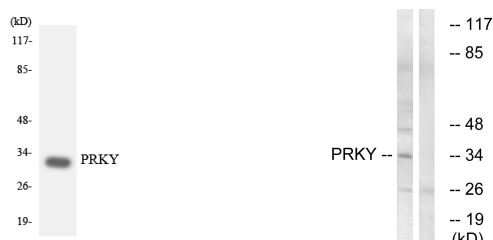
Product Type	Primary antibodies
Short Description	Rabbit polyclonal antibody anti-Putative Serine/Threonine-Protein Kinase Prky (30-110 Internal) is suitable for use in Western Blot, Immunohistochemistry, Immunofluorescence and ELISA research applications.
Applications	WB, IHC-P, IF-P, ELISA
Host/Source	Rabbit
Reactivity	Human, Rat, Mouse

PRODUCT PROPERTIES

Clonality	Polyclonal
Clone ID	
Concentration	1 mg/mL
Conjugation	Unconjugated
Purification	The antibody was affinity-purified from rabbit anti-serum by affinity-chromatography.
Dilution Range	WB 1:500-1:2000 IHC 1:100-1:300 ELISA 1:20000
Formulation	PBS, 50% Glycerol, 0.5% BSA and 0.02% Sodium Azide.
Isotype	IgG
Storage Instruction	Store at -20°C for up to 1 year from the date of receipt, and avoid repeat freeze-thaw cycles.

TARGET INFORMATION

Gene ID	NA
Gene Symbol	PRKY
Uniprot ID	PRKY_HUMAN
Immunogen Region	The antiserum was produced against synthesized peptide derived from human PRKY at amino acid range 61-110 30-110 Internal
Specificity	PRKY polyclonal antibody (Putative Serine/Threonine-Protein Kinase Prky) binds to endogenous Putative Serine/Threonine-Protein Kinase Prky at the amino acid region 30-110 Internal.
Immunogen Sequence	



Western blot analysis of the lysates from COLO205 cells using PRKY antibody.

Western blot analysis of lysates from Jurkat cells, using PRKY Antibody. The lane on the right is blocked with the synthesized peptide.

This product is suitable for in-vitro studies under the RESEARCH USE ONLY [RUO] licence. This product must not be used as for diagnostic or other medical purposes.
St John's Laboratory Ltd, Knowledge Dock Business Centre, University Way, London, E16 2RD | Tel: 0208 223 3081