

Anti-PRKX antibody (220-300 Internal) (STJ95224)

STJ95224

GENERAL INFORMATION

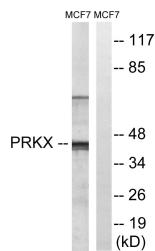
Product Type	Primary antibodies
Short Description	Rabbit polyclonal antibody anti-Camp-Dependent Protein Kinase Catalytic Subunit Prkx (220-300 Internal) is suitable for use in Western Blot, Immunohistochemistry, Immunofluorescence and ELISA research applications.
Applications	WB, IHC-P, IF-P, ELISA
Host/Source	Rabbit
Reactivity	Human, Mouse, Rat

PRODUCT PROPERTIES

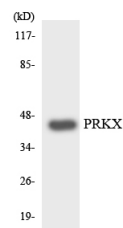
Clonality	Polyclonal
Clone ID	-
Concentration	1 mg/mL
Conjugation	Unconjugated
Purification	The antibody was affinity-purified from rabbit anti-serum by affinity-chromatography.
Dilution Range	WB 1:500-1:2000 IHC 1:100-1:300 ELISA 1:20000
Formulation	PBS, 50% Glycerol, 0.5% BSA and 0.02% Sodium Azide.
Isotype	IgG
Storage Instruction	Store at -20°C for up to 1 year from the date of receipt, and avoid repeat freeze-thaw cycles.

TARGET INFORMATION

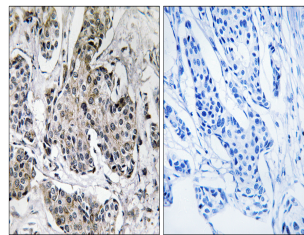
Gene ID	5613
Gene Symbol	PRKX
Uniprot ID	PRKX_HUMAN
Immunogen	The antiserum was produced against synthesized peptide derived from human PRKX at amino acid range 251-300
Immunogen Region	220-300 Internal
Specificity	PRKX polyclonal antibody (Camp-Dependent Protein Kinase Catalytic Subunit Prkx) binds to endogenous Camp-Dependent Protein Kinase Catalytic Subunit Prkx at the amino acid region 220-300 Internal.
Immunogen Sequence	



Western blot analysis of lysates from MCF-7 cells, using PRKX Antibody. The lane on the right is blocked with the synthesized peptide.



Western blot analysis of the lysates from HepG2 cells using PRKX antibody.



Immunohistochemistry analysis of paraffin-embedded human breast carcinoma tissue, using PRKX Antibody. The picture on the right is blocked with the synthesized peptide.