

Anti-PRIM1 antibody (340-420 C-Term) (STJ95223)

STJ95223

GENERAL INFORMATION

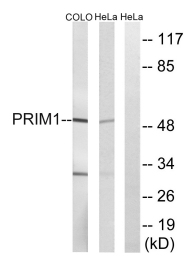
Product Type	Primary antibodies
Short Description	Rabbit polyclonal antibody anti-Dna Primase Small Subunit (340-420 C-Term) is suitable for use in Western Blot, Immunohistochemistry, Immunofluorescence and ELISA research applications.
Applications	WB, IHC-P, IF-P, ELISA
Host/Source	Rabbit
Reactivity	Human, Mouse, Rat

PRODUCT PROPERTIES

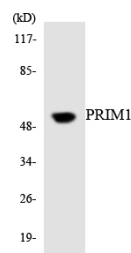
Clonality	Polyclonal
Clone ID	
Concentration	1 mg/mL
Conjugation	Unconjugated
Purification	The antibody was affinity-purified from rabbit anti-serum by affinity-chromatography.
Dilution Range	WB 1:500-1:2000 IHC 1:100-1:300 ELISA 1:10000
Formulation	PBS, 50% Glycerol, 0.5% BSA and 0.02% Sodium Azide.
Isotype	IgG
Storage Instruction	Store at -20°C for up to 1 year from the date of receipt, and avoid repeat freeze-thaw cycles.

TARGET INFORMATION

Gene ID	5557
Gene Symbol	PRIM1
Uniprot ID	PRI1_HUMAN
Immunogen	The antiserum was produced against synthesized peptide derived from human PRIM1 at amino acid range 371-420
Immunogen Region	340-420 C-Term
Specificity	PRIM1 polyclonal antibody (Dna Primase Small Subunit) binds to endogenous Dna Primase Small Subunit at the amino acid region 340-420 C-Term.
Immunogen Sequence	



Western blot analysis of lysates from COLO and HeLa cells, using PRIM1 Antibody. The lane on the right is blocked with the synthesized peptide.



Western blot analysis of the lysates from K562 cells using PRIM1 antibody.



Western blot analysis of various cells using PRIM1 Polyclonal Antibody cells nucleus extracted by Minute™ Cytoplasmic and Nuclear Fractionation kit (SC-003, Inventiotech, MN, USA).