

Anti-PSEN1 antibody (300-380) (STJ95221)

STJ95221

GENERAL INFORMATION

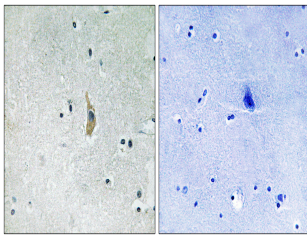
Product Type	Primary antibodies
Short Description	Rabbit polyclonal antibody anti-Presenilin-1 (300-380) is suitable for use in Western Blot, Immunohistochemistry, Immunofluorescence and ELISA research applications.
Applications	WB, IHC-P, IF-P, ELISA
Host/Source	Rabbit
Reactivity	Human, Mouse, Rat

PRODUCT PROPERTIES

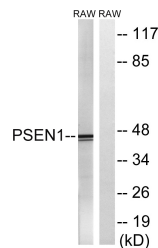
Clonality	Polyclonal
Clone ID	
Concentration	1 mg/mL
Conjugation	Unconjugated
Purification	The antibody was affinity-purified from rabbit anti-serum by affinity-chromatography.
Dilution Range	WB 1:500-1:2000 IHC 1:100-1:300 ELISA 1:5000
Formulation	PBS, 50% Glycerol, 0.5% BSA and 0.02% Sodium Azide.
Isotype	IgG
Storage Instruction	Store at -20°C for up to 1 year from the date of receipt, and avoid repeat freeze-thaw cycles.

TARGET INFORMATION

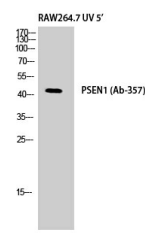
Gene ID	5663
Gene Symbol	PSEN1
Uniprot ID	PSN1_HUMAN
Immunogen	The antiserum was produced against synthesized peptide derived from human PSEN1 at amino acid range 323-372
Immunogen Region	300-380
Specificity	PSEN1 polyclonal antibody (Presenilin-1) binds to endogenous Presenilin-1 at the amino acid region 300-380.
Immunogen Sequence	



Immunohistochemistry analysis of paraffin-embedded human brain tissue, using PSEN1 Antibody. The picture on the right is blocked with the synthesized peptide.



Western blot analysis of lysates from Raw264.7 cells, treated with UV 5', using PSEN1 Antibody. The lane on the right is blocked with the synthesized peptide.



Western blot analysis of RAW264.7 UV 5' cells using Presenilin 1 Polyclonal Antibody