

Anti-PRDM12 antibody (160-240 Internal) (STJ95217)

STJ95217

GENERAL INFORMATION

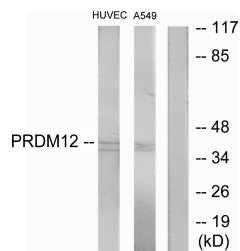
Product Type	Primary antibodies
Short Description	Rabbit polyclonal antibody anti-Pr Domain Zinc Finger Protein 12 (160-240 Internal) is suitable for use in Western Blot, Immunofluorescence, Immunocytochemistry and ELISA research applications.
Applications	WB, IF, ICC, ELISA
Host/Source	Rabbit
Reactivity	Human, Mouse

PRODUCT PROPERTIES

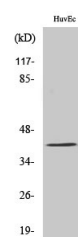
Clonality	Polyclonal
Clone ID	
Concentration	1 mg/mL
Conjugation	Unconjugated
Purification	The antibody was affinity-purified from rabbit anti-serum by affinity-chromatography.
Dilution Range	WB 1:500-1:2000 IF 1:200-1:1000 ELISA 1:20000
Formulation	PBS, 50% Glycerol, 0.5% BSA and 0.02% Sodium Azide.
Isotype	IgG
Storage Instruction	Store at -20°C for up to 1 year from the date of receipt, and avoid repeat freeze-thaw cycles.

TARGET INFORMATION

Gene ID	59335
Gene Symbol	PRDM12
Uniprot ID	PRD12_HUMAN
Immunogen	The antiserum was produced against synthesized peptide derived from human PRDM12 at amino acid range 191-240
Immunogen Region	160-240 Internal
Specificity	PRDM12 polyclonal antibody (Pr Domain Zinc Finger Protein 12) binds to endogenous Pr Domain Zinc Finger Protein 12 at the amino acid region 160-240 Internal.
Immunogen Sequence	



Western blot analysis of lysates from HUVEC and A549 cells, using PRDM12 Antibody. The lane on the right is blocked with the synthesized peptide.



Western blot analysis of various cells using PRDM12 Polyclonal Antibody cells nucleus extracted by Minute™ Cytoplasmic and Nuclear Fractionation kit (SC-003, Inventibiotech, MN, USA).

This product is suitable for in-vitro studies under the RESEARCH USE ONLY [RUO] licence. This product must not be used as for diagnostic or other medical purposes.
St John's Laboratory Ltd, Knowledge Dock Business Centre, University Way, London, E16 2RD | Tel: 0208 223 3081