

Anti-AKT1S1 antibody (180-260) (STJ95215)

STJ95215

GENERAL INFORMATION

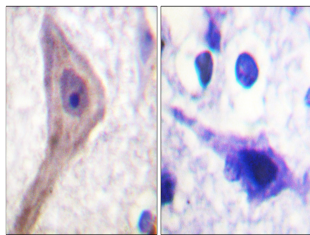
Product Type	Primary antibodies
Short Description	Rabbit polyclonal antibody anti-Proline-Rich Akt1 Substrate 1 (180-260) is suitable for use in Western Blot, Immunohistochemistry, Immunofluorescence and ELISA research applications.
Applications	WB, IHC-P, IF-P, ELISA
Host/Source	Rabbit
Reactivity	Human, Mouse, Rat

PRODUCT PROPERTIES

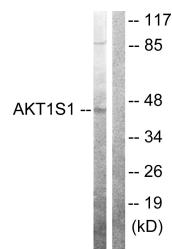
Clonality	Polyclonal
Clone ID	
Concentration	1 mg/mL
Conjugation	Unconjugated
Purification	The antibody was affinity-purified from rabbit anti-serum by affinity-chromatography.
Dilution Range	WB 1:500-1:2000 IHC 1:100-1:300 ELISA 1:5000
Formulation	PBS, 50% Glycerol, 0.5% BSA and 0.02% Sodium Azide.
Isotype	IgG
Storage Instruction	Store at -20°C for up to 1 year from the date of receipt, and avoid repeat freeze-thaw cycles.

TARGET INFORMATION

Gene ID	84335
Gene Symbol	AKT1S1
Uniprot ID	AKTS1_HUMAN
Immunogen	The antiserum was produced against synthesized peptide derived from human Akt1 S1 at amino acid range 207-256
Immunogen Region	180-260
Specificity	AKT1S1 polyclonal antibody (Proline-Rich Akt1 Substrate 1) binds to endogenous Proline-Rich Akt1 Substrate 1 at the amino acid region 180-260.
Immunogen Sequence	



Immunohistochemistry analysis of paraffin-embedded human brain tissue, using Akt1 S1 Antibody. The picture on the right is blocked with the synthesized peptide.



Western blot analysis of lysates from 293 cells, using Akt1 S1 Antibody. The lane on the right is blocked with the synthesized peptide.



Western blot analysis of various cells using PRAS40 Polyclonal Antibody

This product is suitable for in-vitro studies under the RESEARCH USE ONLY [RUO] licence. This product must not be used as for diagnostic or other medical purposes.
St John's Laboratory Ltd, Knowledge Dock Business Centre, University Way, London, E16 2RD | Tel: 0208 223 3081