

Anti-PGR antibody (340-420) (STJ95208)

STJ95208

GENERAL INFORMATION

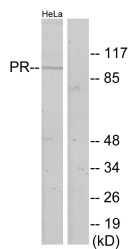
Product Type	Primary antibodies
Short Description	Rabbit polyclonal antibody anti-Progesterone Receptor (340-420) is suitable for use in Western Blot, Immunohistochemistry, Immunofluorescence, Immunocytochemistry and ELISA research applications.
Applications	WB, IHC-P, IF, ICC, ELISA
Host/Source	Rabbit
Reactivity	Human, Rat, Mouse

PRODUCT PROPERTIES

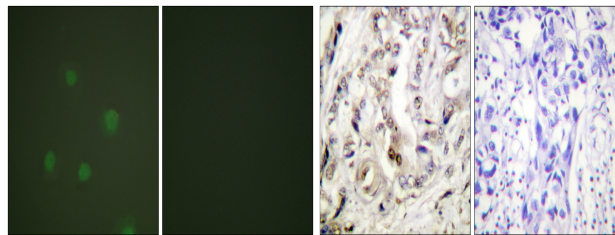
Clonality	Polyclonal
Clone ID	
Concentration	1 mg/mL
Conjugation	Unconjugated
Purification	The antibody was affinity-purified from rabbit anti-serum by affinity-chromatography.
Dilution Range	WB 1:500-1:2000 IHC 1:100-1:300 IF 1:200-1:1000 ELISA 1:5000
Formulation	PBS, 50% Glycerol, 0.5% BSA and 0.02% Sodium Azide.
Isotype	IgG
Storage Instruction	Store at -20°C for up to 1 year from the date of receipt, and avoid repeat freeze-thaw cycles.

TARGET INFORMATION

Gene ID	5241
Gene Symbol	PGR
Uniprot ID	PRGR_HUMAN
Immunogen	The antiserum was produced against synthesized peptide derived from human Progesterone Receptor at amino acid range 371-420
Immunogen Region	340-420
Specificity	PGR polyclonal antibody (Progesterone Receptor) binds to endogenous Progesterone Receptor at the amino acid region 340-420.
Immunogen Sequence	

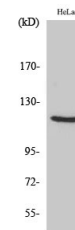


Western blot analysis of lysates from HeLa cells, using Progesterone Receptor Antibody. The lane on the right is blocked with the synthesized peptide.



Immunofluorescence analysis of A549 cells, using Progesterone Receptor Antibody. The picture on the right is blocked with the synthesized peptide.

Immunohistochemistry analysis of paraffin-embedded human breast carcinoma tissue, using Progesterone Receptor Antibody. The picture on the right is blocked with the synthesized peptide.



Western blot analysis of various cells using PR Polyclonal Antibody