

Anti-PPP4R1L antibody (160-240 Internal) (STJ95207)

STJ95207

GENERAL INFORMATION

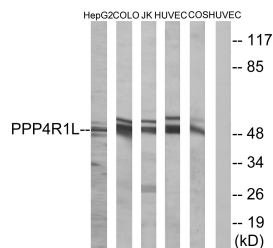
Product Type	Primary antibodies
Short Description	Rabbit polyclonal antibody anti-Putative Serine/Threonine-Protein Phosphatase 4 Regulatory Subunit 1-Like (160-240 Internal) is suitable for use in Western Blot and ELISA research applications.
Applications	WB, ELISA
Host/Source	Rabbit
Reactivity	Human, Monkey

PRODUCT PROPERTIES

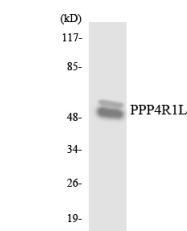
Clonality	Polyclonal
Clone ID	
Concentration	1 mg/mL
Conjugation	Unconjugated
Purification	The antibody was affinity-purified from rabbit anti-serum by affinity-chromatography.
Dilution	WB 1:500-1:2000
Range	ELISA 1:10000
Formulation	PBS, 50% Glycerol, 0.5% BSA and 0.02% Sodium Azide.
Isotype	IgG
Storage	Store at -20°C for up to 1 year from the date of receipt, and avoid repeat freeze-thaw cycles.
Instruction	

TARGET INFORMATION

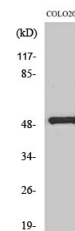
Gene ID	NA
Gene Symbol	PPP4R1L
Uniprot ID	PP4RL_HUMAN
Immunogen	The antiserum was produced against synthesized peptide derived from human PPP4R1L at amino acid range 191-240
Immunogen Region	160-240 Internal
Specificity	PPP4R1L polyclonal antibody (Putative Serine/Threonine-Protein Phosphatase 4 Regulatory Subunit 1-Like) binds to endogenous Putative Serine/Threonine-Protein Phosphatase 4 Regulatory Subunit 1-Like at the amino acid region 160-240 Internal.
Immunogen Sequence	



Western blot analysis of lysates from COLO, HUVEC, HepG2, Jurkat, and COS cells, using PPP4R1L Antibody. The lane on the right is blocked with the synthesized peptide.



Western blot analysis of the lysates from HepG2 cells using PPP4R1L antibody.



Western blot analysis of various cells using PPP4R1L Polyclonal Antibody.

This product is suitable for in-vitro studies under the RESEARCH USE ONLY [RUO] licence. This product must not be used as for diagnostic or other medical purposes.
 St John's Laboratory Ltd, Knowledge Dock Business Centre, University Way, London, E16 2RD | Tel: 0208 223 3081