

Anti-PPP2R3C antibody (140-220 Internal) (STJ95206)

STJ95206

GENERAL INFORMATION

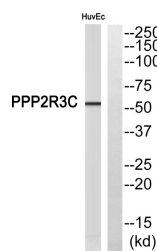
| | |
|--------------------------|--|
| Product Type | Primary antibodies |
| Short Description | Rabbit polyclonal antibody anti-Serine/Threonine-Protein Phosphatase 2a Regulatory Subunit B Subunit Gamma (140-220 Internal) is suitable for use in Western Blot and ELISA research applications. |
| Applications | WB, ELISA |
| Host/Source | Rabbit |
| Reactivity | Human, Mouse, Rat |

PRODUCT PROPERTIES

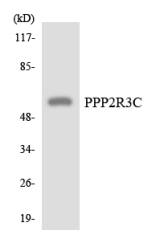
| | |
|----------------------|--|
| Clonality | Polyclonal |
| Clone ID | |
| Concentration | 1 mg/mL |
| Conjugation | Unconjugated |
| Purification | The antibody was affinity-purified from rabbit anti-serum by affinity-chromatography. |
| Dilution | WB 1:500-1:2000 |
| Range | ELISA 1:20000 |
| Formulation | PBS, 50% Glycerol, 0.5% BSA and 0.02% Sodium Azide. |
| Isotype | IgG |
| Storage | Store at -20°C for up to 1 year from the date of receipt, and avoid repeat freeze-thaw cycles. |
| Instruction | |

TARGET INFORMATION

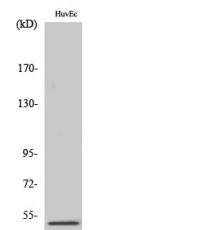
| | |
|---------------------------|--|
| Gene ID | 55012 |
| Gene Symbol | PPP2R3C |
| Uniprot ID | P2R3C_HUMAN |
| Immunogen | The antiserum was produced against synthesized peptide derived from human PPP2R3C at amino acid range 165-214 |
| Immunogen Region | 140-220 Internal |
| Specificity | PPP2R3C polyclonal antibody (Serine/Threonine-Protein Phosphatase 2a Regulatory Subunit B NA'subunit Gamma) binds to endogenous Serine/Threonine-Protein Phosphatase 2a Regulatory Subunit B NA'subunit Gamma at the amino acid region 140-220 Internal. |
| Immunogen Sequence | |



Western blot analysis of PPP2R3C Antibody. The lane on the right is blocked with the PPP2R3C peptide.



Western blot analysis of the lysates from HepG2 cells using PPP2R3C antibody.



Western blot analysis of various cells using PPP2R3C Polyclonal Antibody

This product is suitable for in-vitro studies under the RESEARCH USE ONLY [RUO] licence. This product must not be used as for diagnostic or other medical purposes.
 St John's Laboratory Ltd, Knowledge Dock Business Centre, University Way, London, E16 2RD | Tel: 0208 223 3081