

Anti-PPP1R3A antibody (620-700 Internal) (STJ95205)

STJ95205

GENERAL INFORMATION

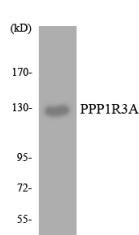
Product Type	Primary antibodies
Short Description	Rabbit polyclonal antibody anti-Protein Phosphatase 1 Regulatory Subunit 3a (620-700 Internal) is suitable for use in Western Blot and ELISA research applications.
Applications	WB, ELISA
Host/Source	Rabbit
Reactivity	Human, Rat, Mouse

PRODUCT PROPERTIES

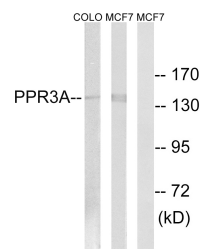
Clonality	Polyclonal
Clone ID	
Concentration	1 mg/mL
Conjugation	Unconjugated
Purification	The antibody was affinity-purified from rabbit anti-serum by affinity-chromatography.
Dilution Range	WB 1:500-1:2000 ELISA 1:20000
Formulation	PBS, 50% Glycerol, 0.5% BSA and 0.02% Sodium Azide.
Isotype	IgG
Storage Instruction	Store at -20°C for up to 1 year from the date of receipt, and avoid repeat freeze-thaw cycles.

TARGET INFORMATION

Gene ID	5506
Gene Symbol	PPP1R3A
Uniprot ID	PPR3A_HUMAN
Immunogen	The antiserum was produced against synthesized peptide derived from human PPP1R3A at amino acid range 647-696
Immunogen Region	620-700 Internal
Specificity	PPP1R3A polyclonal antibody (Protein Phosphatase 1 Regulatory Subunit 3a) binds to endogenous Protein Phosphatase 1 Regulatory Subunit 3a at the amino acid region 620-700 Internal.
Immunogen Sequence	



Western blot analysis of the lysates from HT-29 cells using PPP1R3A antibody.



Western blot analysis of lysates from MCF-7 and COLO cells, using PPP1R3A Antibody. The lane on the right is blocked with the synthesized peptide.

This product is suitable for in-vitro studies under the RESEARCH USE ONLY [RUO] licence. This product must not be used as for diagnostic or other medical purposes.
St John's Laboratory Ltd, Knowledge Dock Business Centre, University Way, London, E16 2RD | Tel: 0208 223 3081