

Anti-PPP1R1C antibody (20-100 N-Term) (STJ95203)

STJ95203

GENERAL INFORMATION

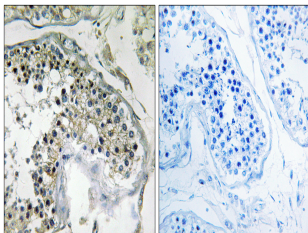
Product Type	Primary antibodies
Short Description	Rabbit polyclonal antibody anti-Protein Phosphatase 1 Regulatory Subunit 1c (20-100 N-Term) is suitable for use in Immunohistochemistry, Immunofluorescence and ELISA research applications.
Applications	IHC-P, IF-P, ELISA
Host/Source	Rabbit
Reactivity	Human, Mouse

PRODUCT PROPERTIES

Clonality	Polyclonal
Clone ID	
Concentration	1 mg/mL
Conjugation	Unconjugated
Purification	The antibody was affinity-purified from rabbit anti-serum by affinity-chromatography.
Dilution Range	IHC 1:100-1:300 ELISA 1:10000
Formulation	PBS, 50% Glycerol, 0.5% BSA and 0.02% Sodium Azide.
Isotype	IgG
Storage	Store at -20°C for up to 1 year from the date of receipt, and avoid repeat freeze-thaw cycles.
Instruction	

TARGET INFORMATION

Gene ID	151242
Gene Symbol	PPP1R1C
Uniprot ID	PPR1C_HUMAN
Immunogen	The antiserum was produced against synthesized peptide derived from human PPP1R1C at amino acid range 5-54
Immunogen Region	20-100 N-Term
Specificity	PPP1R1C polyclonal antibody (Protein Phosphatase 1 Regulatory Subunit 1c) binds to endogenous Protein Phosphatase 1 Regulatory Subunit 1c at the amino acid region 20-100 N-Term.
Immunogen Sequence	



Immunohistochemistry analysis of paraffin-embedded human testis tissue, using PPP1R1C Antibody. The picture on the right is blocked with the synthesized peptide.