

Anti-PPP1R14D antibody (40-120 Internal) (STJ95202)

STJ95202

GENERAL INFORMATION

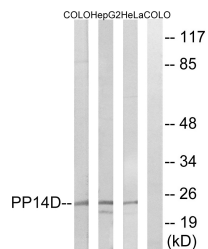
Product Type	Primary antibodies
Short Description	Rabbit polyclonal antibody anti-Protein Phosphatase 1 Regulatory Subunit 14d (40-120 Internal) is suitable for use in Western Blot, Immunohistochemistry, Immunofluorescence and ELISA research applications.
Applications	WB, IHC-P, IF-P, ELISA
Host/Source	Rabbit
Reactivity	Human, Rat, Mouse

PRODUCT PROPERTIES

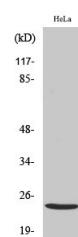
Clonality	Polyclonal
Clone ID	
Concentration	1 mg/mL
Conjugation	Unconjugated
Purification	The antibody was affinity-purified from rabbit anti-serum by affinity-chromatography.
Dilution Range	WB 1:500-1:2000 IHC 1:100-1:300 ELISA 1:5000
Formulation	PBS, 50% Glycerol, 0.5% BSA and 0.02% Sodium Azide.
Isotype	IgG
Storage Instruction	Store at -20°C for up to 1 year from the date of receipt, and avoid repeat freeze-thaw cycles.

TARGET INFORMATION

Gene ID	54866
Gene Symbol	PPP1R14D
Uniprot ID	PP14D_HUMAN
Immunogen Region	The antiserum was produced against synthesized peptide derived from human PPP1R14D at amino acid range 66-115
Immunogen Region	40-120 Internal
Specificity	PPP1R14D polyclonal antibody (Protein Phosphatase 1 Regulatory Subunit 14d) binds to endogenous Protein Phosphatase 1 Regulatory Subunit 14d at the amino acid region 40-120 Internal.
Immunogen Sequence	



Western blot analysis of lysates from HeLa, HepG2, and COLO cells, using PPP1R14D Antibody. The lane on the right is blocked with the synthesized peptide.



Western blot analysis of various cells using PPP1R14D Polyclonal Antibody

This product is suitable for in-vitro studies under the RESEARCH USE ONLY [RUO] licence. This product must not be used as for diagnostic or other medical purposes.
 St John's Laboratory Ltd, Knowledge Dock Business Centre, University Way, London, E16 2RD | Tel: 0208 223 3081