

Anti-PPP4R2 antibody (140-220 Internal) (STJ95199)

STJ95199

GENERAL INFORMATION

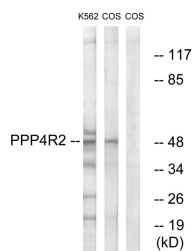
Product Type	Primary antibodies
Short Description	Rabbit polyclonal antibody anti-Serine/Threonine-Protein Phosphatase 4 Regulatory Subunit 2 (140-220 Internal) is suitable for use in Western Blot, Immunohistochemistry, Immunofluorescence and ELISA research applications.
Applications	WB, IHC-P, IF-P, ELISA
Host/Source	Rabbit
Reactivity	Human, Monkey

PRODUCT PROPERTIES

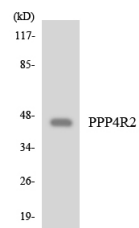
Clonality	Polyclonal
Clone ID	
Concentration	1 mg/mL
Conjugation	Unconjugated
Purification	The antibody was affinity-purified from rabbit anti-serum by affinity-chromatography.
Dilution Range	WB 1:500-1:2000 IHC 1:100-1:300 ELISA 1:5000
Formulation	PBS, 50% Glycerol, 0.5% BSA and 0.02% Sodium Azide.
Isotype	IgG
Storage Instruction	Store at -20°C for up to 1 year from the date of receipt, and avoid repeat freeze-thaw cycles.

TARGET INFORMATION

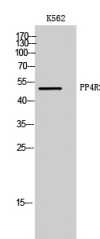
Gene ID	151987
Gene Symbol	PPP4R2
Uniprot ID	PP4R2_HUMAN
Immunogen Region	The antiserum was produced against synthesized peptide derived from human PPP4R2 at amino acid range 171-220 140-220 Internal
Specificity	PPP4R2 polyclonal antibody (Serine/Threonine-Protein Phosphatase 4 Regulatory Subunit 2) binds to endogenous Serine/Threonine-Protein Phosphatase 4 Regulatory Subunit 2 at the amino acid region 140-220 Internal.
Immunogen Sequence	



Western blot analysis of lysates from K562 and COS7 cells, using PPP4R2 Antibody. The lane on the right is blocked with the synthesized peptide.



Western blot analysis of the lysates from COLO205 cells using PPP4R2 antibody.



Western blot analysis of K562 cells using PPP4R2 Polyclonal Antibody

This product is suitable for in-vitro studies under the RESEARCH USE ONLY [RUO] licence. This product must not be used as for diagnostic or other medical purposes.
St John's Laboratory Ltd, Knowledge Dock Business Centre, University Way, London, E16 2RD | Tel: 0208 223 3081