

## Anti-ANP32C antibody (90-170 Internal) (STJ95198)

STJ95198

### GENERAL INFORMATION

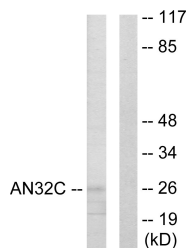
<b>Product Type</b>	Primary antibodies
<b>Short Description</b>	Rabbit polyclonal antibody anti-Acidic Leucine-Rich Nuclear Phosphoprotein 32 Family Member C (90-170 Internal) is suitable for use in Western Blot and ELISA research applications.
<b>Applications</b>	WB, ELISA
<b>Host/Source</b>	Rabbit
<b>Reactivity</b>	Human, Rat, Mouse

### PRODUCT PROPERTIES

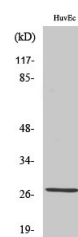
<b>Clonality</b>	Polyclonal
<b>Clone ID</b>	
<b>Concentration</b>	1 mg/mL
<b>Conjugation</b>	Unconjugated
<b>Purification</b>	The antibody was affinity-purified from rabbit anti-serum by affinity-chromatography.
<b>Dilution</b>	WB 1:500-1:2000
<b>Range</b>	ELISA 1:10000
<b>Formulation</b>	PBS, 50% Glycerol, 0.5% BSA and 0.02% Sodium Azide.
<b>Isotype</b>	IgG
<b>Storage</b>	Store at -20°C for up to 1 year from the date of receipt, and avoid repeat freeze-thaw cycles.
<b>Instruction</b>	

### TARGET INFORMATION

<b>Gene ID</b>	23520
<b>Gene Symbol</b>	ANP32C
<b>Uniprot ID</b>	AN32C_HUMAN
<b>Immunogen</b>	The antiserum was produced against synthesized peptide derived from human ANP32C at amino acid range 121-170
<b>Immunogen Region</b>	90-170 Internal
<b>Specificity</b>	ANP32C polyclonal antibody (Acidic Leucine-Rich Nuclear Phosphoprotein 32 Family Member C) binds to endogenous Acidic Leucine-Rich Nuclear Phosphoprotein 32 Family Member C at the amino acid region 90-170 Internal.
<b>Immunogen Sequence</b>	



Western blot analysis of lysates from HUVEC cells, using ANP32C Antibody. The lane on the right is blocked with the synthesized peptide.



Western blot analysis of various cells using PP32R1 Polyclonal Antibody diluted at 1: 1000

This product is suitable for in-vitro studies under the RESEARCH USE ONLY [RUO] licence. This product must not be used as for diagnostic or other medical purposes.  
 St John's Laboratory Ltd, Knowledge Dock Business Centre, University Way, London, E16 2RD | Tel: 0208 223 3081