

## Anti-PPM1K antibody (180-260 Internal) (STJ95197)

STJ95197

### GENERAL INFORMATION

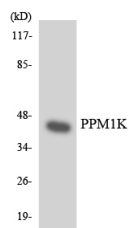
<b>Product Type</b>	Primary antibodies
<b>Short Description</b>	Rabbit polyclonal antibody anti-Protein Phosphatase 1k-Mitochondrial (180-260 Internal) is suitable for use in Western Blot, Immunohistochemistry, Immunofluorescence and ELISA research applications.
<b>Applications</b>	WB, IHC-P, IF-P, ELISA
<b>Host/Source</b>	Rabbit
<b>Reactivity</b>	Human, Rat, Mouse

### PRODUCT PROPERTIES

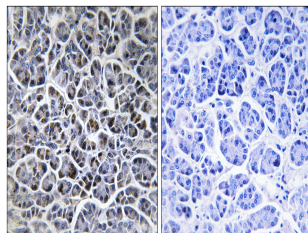
<b>Clonality</b>	Polyclonal
<b>Clone ID</b>	
<b>Concentration</b>	1 mg/mL
<b>Conjugation</b>	Unconjugated
<b>Purification</b>	The antibody was affinity-purified from rabbit anti-serum by affinity-chromatography.
<b>Dilution Range</b>	WB 1:500-1:2000 IHC 1:100-1:300 ELISA 1:40000
<b>Formulation</b>	PBS, 50% Glycerol, 0.5% BSA and 0.02% Sodium Azide.
<b>Isotype</b>	IgG
<b>Storage Instruction</b>	Store at -20°C for up to 1 year from the date of receipt, and avoid repeat freeze-thaw cycles.

### TARGET INFORMATION

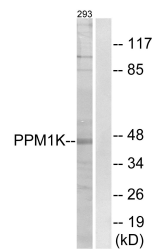
<b>Gene ID</b>	152926
<b>Gene Symbol</b>	PPM1K
<b>Uniprot ID</b>	PPM1K_HUMAN
<b>Immunogen</b>	The antiserum was produced against synthesized peptide derived from human PPM1K at amino acid range 205-254
<b>Immunogen Region</b>	180-260 Internal
<b>Specificity</b>	PPM1K polyclonal antibody (Protein Phosphatase 1k-Mitochondrial) binds to endogenous Protein Phosphatase 1k-Mitochondrial at the amino acid region 180-260 Internal.
<b>Immunogen Sequence</b>	



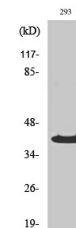
Western blot analysis of the lysates from HeLa cells using PPM1K antibody.



Immunohistochemistry analysis of paraffin-embedded human pancreas tissue, using PPM1K Antibody. The picture on the right is blocked with the synthesized peptide.



Western blot analysis of lysates from 293 cells, using PPM1K Antibody. The lane on the right is blocked with the synthesized peptide.



Western blot analysis of various cells using PP2C Kappa Polyclonal Antibody

This product is suitable for in-vitro studies under the RESEARCH USE ONLY [RUO] licence. This product must not be used as for diagnostic or other medical purposes.  
 St John's Laboratory Ltd, Knowledge Dock Business Centre, University Way, London, E16 2RD | Tel: 0208 223 3081