

Anti-PPM1L antibody (90-170 Internal) (STJ95196)

STJ95196

GENERAL INFORMATION

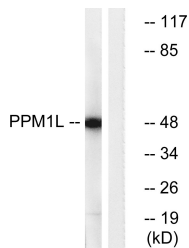
Product Type	Primary antibodies
Short Description	Rabbit polyclonal antibody anti-Protein Phosphatase 1l (90-170 Internal) is suitable for use in Western Blot and ELISA research applications.
Applications	WB, ELISA
Host/Source	Rabbit
Reactivity	Human, Mouse, Rat

PRODUCT PROPERTIES

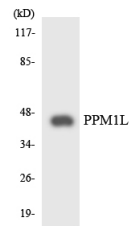
Clonality	Polyclonal
Clone ID	
Concentration	1 mg/mL
Conjugation	Unconjugated
Purification	The antibody was affinity-purified from rabbit anti-serum by affinity-chromatography.
Dilution Range	WB 1:500-1:2000 ELISA 1:10000
Formulation	PBS, 50% Glycerol, 0.5% BSA and 0.02% Sodium Azide.
Isotype	IgG
Storage Instruction	Store at -20°C for up to 1 year from the date of receipt, and avoid repeat freeze-thaw cycles.

TARGET INFORMATION

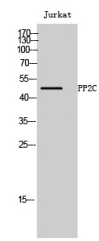
Gene ID	151742
Gene Symbol	PPM1L
Uniprot ID	PPM1L_HUMAN
Immunogen	The antiserum was produced against synthesized peptide derived from human PPM1L at amino acid range 119-168
Immunogen Region	90-170 Internal
Specificity	PPM1L polyclonal antibody (Protein Phosphatase 1l) binds to endogenous Protein Phosphatase 1l at the amino acid region 90-170 Internal.
Immunogen Sequence	



Western blot analysis of lysates from Jurkat cells, using PPM1L Antibody. The lane on the right is blocked with the synthesized peptide.



Western blot analysis of the lysates from HepG2 cells using PPM1L antibody.



Western blot analysis of Jurkat cells using PP2C Epsilon Polyclonal Antibody

This product is suitable for in-vitro studies under the RESEARCH USE ONLY [RUO] licence. This product must not be used as for diagnostic or other medical purposes.
St John's Laboratory Ltd, Knowledge Dock Business Centre, University Way, London, E16 2RD | Tel: 0208 223 3081