

Anti-PPP2R5A antibody (290-370 Internal) (STJ95193)

STJ95193

GENERAL INFORMATION

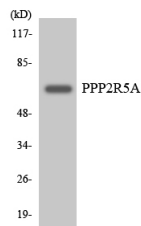
Product Type	Primary antibodies
Short Description	Rabbit polyclonal antibody anti-Serine/Threonine-Protein Phosphatase 2a 56 Kda Regulatory Subunit Alpha Isoform (290-370 Internal) is suitable for use in Western Blot and ELISA research applications.
Applications	WB, ELISA
Host/Source	Rabbit
Reactivity	Human, Mouse, Rat

PRODUCT PROPERTIES

Clonality	Polyclonal
Clone ID	
Concentration	1 mg/mL
Conjugation	Unconjugated
Purification	The antibody was affinity-purified from rabbit anti-serum by affinity-chromatography.
Dilution	WB 1:500-1:2000
Range	ELISA 1:5000
Formulation	PBS, 50% Glycerol, 0.5% BSA and 0.02% Sodium Azide.
Isotype	IgG
Storage	Store at -20°C for up to 1 year from the date of receipt, and avoid repeat freeze-thaw cycles.
Instruction	

TARGET INFORMATION

Gene ID	5525
Gene Symbol	PPP2R5A
Uniprot ID	2A5A_HUMAN
Immunogen	The antiserum was produced against synthesized peptide derived from human PPP2R5A at amino acid range 321-370
Immunogen Region	290-370 Internal
Specificity	PPP2R5A polyclonal antibody (Serine/Threonine-Protein Phosphatase 2a 56 Kda Regulatory Subunit Alpha Isoform) binds to endogenous Serine/Threonine-Protein Phosphatase 2a 56 Kda Regulatory Subunit Alpha Isoform at the amino acid region 290-370 Internally
Immunogen Sequence	



Western blot analysis of the lysates from HeLa cells using PPP2R5A antibody.

This product is suitable for in-vitro studies under the RESEARCH USE ONLY [RUO] licence. This product must not be used as for diagnostic or other medical purposes.
St John's Laboratory Ltd, Knowledge Dock Business Centre, University Way, London, E16 2RD | Tel: 0208 223 3081