

Anti-PPP1CA antibody (260-340) (STJ95190)

STJ95190

GENERAL INFORMATION

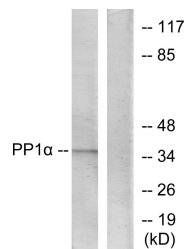
Product Type	Primary antibodies
Short Description	Rabbit polyclonal antibody anti-Serine/Threonine-Protein Phosphatase Pp1-Alpha Catalytic Subunit (260-340) is suitable for use in Western Blot, Immunohistochemistry, Immunofluorescence and ELISA research applications.
Applications	WB, IHC-P, IF-P, ELISA
Host/Source	Rabbit
Reactivity	Human, Mouse, Rat

PRODUCT PROPERTIES

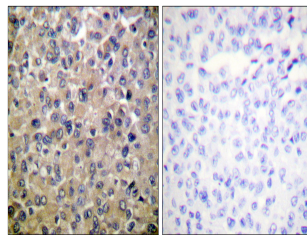
Clonality	Polyclonal
Clone ID	
Concentration	1 mg/mL
Conjugation	Unconjugated
Purification	The antibody was affinity-purified from rabbit anti-serum by affinity-chromatography.
Dilution Range	WB 1:500-1:2000 IHC 1:100-1:300 ELISA 1:5000
Formulation	PBS, 50% Glycerol, 0.5% BSA and 0.02% Sodium Azide.
Isotype	IgG
Storage Instruction	Store at -20°C for up to 1 year from the date of receipt, and avoid repeat freeze-thaw cycles.

TARGET INFORMATION

Gene ID	5499
Gene Symbol	PPP1CA
Uniprot ID	PP1A_HUMAN
Immunogen Region	The antiserum was produced against synthesized peptide derived from human PP1-alpha at amino acid range 281-330
Immunogen Sequence	260-340
Specificity	PPP1CA polyclonal antibody (Serine/Threonine-Protein Phosphatase Pp1-Alpha Catalytic Subunit) binds to endogenous Serine/Threonine-Protein Phosphatase Pp1-Alpha Catalytic Subunit at the amino acid region 260-340.



Western blot analysis of lysates from Jurkat cells, using PP1-alpha Antibody. The lane on the right is blocked with the synthesized peptide.



Immunohistochemistry analysis of paraffin-embedded human breast carcinoma tissue, using PP1-alpha Antibody. The picture on the right is blocked with the synthesized peptide.