

Anti-POTE-14/22 antibody (150-230 Internal) (STJ95187)

STJ95187

GENERAL INFORMATION

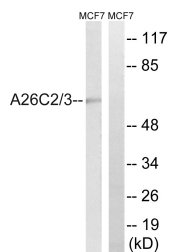
Product Type	Primary antibodies
Short Description	Rabbit polyclonal antibody anti-POTE ankyrin domain family member H and POTE ankyrin domain family member G (150-230 Internal) is suitable for use in Western Blot, Immunohistochemistry, Immunofluorescence and ELISA research applications.
Applications	WB, IHC-P, IF-P, ELISA
Host/Source	Rabbit
Reactivity	Human, Rat, Mouse

PRODUCT PROPERTIES

Clonality	Polyclonal
Clone ID	
Concentration	1 mg/mL
Conjugation	Unconjugated
Purification	The antibody was affinity-purified from rabbit anti-serum by affinity-chromatography.
Dilution Range	WB 1:500-1:2000 IHC 1:100-1:300 ELISA 1:40000
Formulation	PBS, 50% Glycerol, 0.5% BSA and 0.02% Sodium Azide.
Isotype	IgG
Storage Instruction	Store at -20°C for up to 1 year from the date of receipt, and avoid repeat freeze-thaw cycles.

TARGET INFORMATION

Gene ID	404785 23784
Gene Symbol	POTEG POTEH
Uniprot ID	POTEG_HUMAN POTEH_HUMAN
Immunogen	The antiserum was produced against synthesized peptide derived from human A26C2/3 at amino acid range 178-227
Immunogen Region	150-230 Internal
Specificity	POTE-14/22 polyclonal antibody (POTE ankyrin domain family member H and POTE ankyrin domain family member G) binds to endogenous POTE ankyrin domain family member H and POTE ankyrin domain family member G at the amino acid region 150-230 Internal.
Immunogen Sequence	



Western blot analysis of lysates from MCF-7 cells, using A26C2/3 Antibody. The lane on the right is blocked with the synthesized peptide.



Western blot analysis of AD293 using POTE-14/22 Polyclonal Antibody diluted at 1: 2000