

Anti-POTE14/22 antibody (370-450 C-Term) (STJ95186)

STJ95186

GENERAL INFORMATION

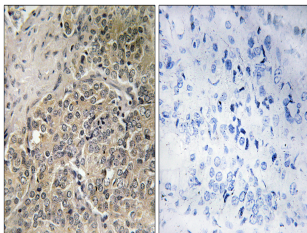
Product Type	Primary antibodies
Short Description	Rabbit polyclonal antibody anti-POTE ankyrin domain family member G and POTE ankyrin domain family member H and Putative POTE ankyrin domain family member M (370-450 C-Term) is suitable for use in Western Blot, Immunohistochemistry, Immunofluorescence
Applications	WB, IHC-P, IF-P, ELISA
Host/Source	Rabbit
Reactivity	Human, Rat, Mouse

PRODUCT PROPERTIES

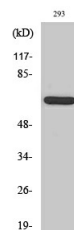
Clonality	Polyclonal
Clone ID	
Concentration	1 mg/mL
Conjugation	Unconjugated
Purification	The antibody was affinity-purified from rabbit anti-serum by affinity-chromatography.
Dilution Range	WB 1:500-1:2000 IHC 1:100-1:300 ELISA 1:40000
Formulation	PBS, 50% Glycerol, 0.5% BSA and 0.02% Sodium Azide.
Isotype	IgG
Storage Instruction	Store at -20°C for up to 1 year from the date of receipt, and avoid repeat freeze-thaw cycles.

TARGET INFORMATION

Gene ID	404785 23784 641455
Gene Symbol	POTEG POTEH POTEG_HUMAN POTEH_HUMAN POTEM_HUMAN
Immunogen	The antiserum was produced against synthesized peptide derived from human POTEG at amino acid range 401-450
Immunogen Region	370-450 C-Term
Specificity	POTE14/22 polyclonal antibody (POTE ankyrin domain family member G and POTE ankyrin domain family member H and Putative POTE ankyrin domain family member M) binds to endogenous POTE ankyrin domain family member G and POTE ankyrin domain family member
Immunogen Sequence	



Immunohistochemistry analysis of paraffin-embedded human prostate carcinoma, using A26C2/3 Antibody. The picture on the right is blocked with the synthesized peptide.



Western blot analysis of various cells using POTE14/22 Polyclonal Antibody

This product is suitable for in-vitro studies under the RESEARCH USE ONLY [RUO] licence. This product must not be used as for diagnostic or other medical purposes.
St John's Laboratory Ltd, Knowledge Dock Business Centre, University Way, London, E16 2RD | Tel: 0208 223 3081