

Anti-POT1 antibody (Internal) (STJ95185)

STJ95185

GENERAL INFORMATION

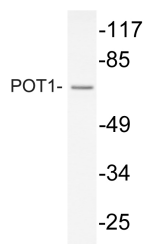
Product Type	Primary antibodies
Short Description	Rabbit polyclonal antibody anti-Protection Of Telomeres Protein 1 (Internal) is suitable for use in Western Blot and ELISA research applications.
Applications	WB, ELISA
Host/Source	Rabbit
Reactivity	Human, Monkey

PRODUCT PROPERTIES

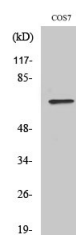
Clonality	Polyclonal
Clone ID	
Concentration	1 mg/mL
Conjugation	Unconjugated
Purification	The antibody was affinity-purified from rabbit anti-serum by affinity-chromatography.
Dilution Range	WB 1:500-1:2000 ELISA 1:10000
Formulation	PBS, 50% Glycerol, 0.5% BSA and 0.02% Sodium Azide.
Isotype	IgG
Storage	Store at -20°C for up to 1 year from the date of receipt, and avoid repeat freeze-thaw cycles.
Instruction	

TARGET INFORMATION

Gene ID	25913
Gene Symbol	POT1
Uniprot ID	POTE1_HUMAN
Immunogen	The antiserum was produced against synthesized peptide derived from human POT1 at amino acid range 247-296
Immunogen Region	Internal
Specificity	POT1 polyclonal antibody (Protection Of Telomeres Protein 1) binds to endogenous Protection Of Telomeres Protein 1 at the amino acid region Internal.
Immunogen Sequence	



Western blot analysis of lysate from COS7 cells, using POT1 antibody.



Western blot analysis of various cells using POT1 Polyclonal Antibody cells nucleus extracted by Minute TM Cyttoplasmic and Nuclear Fractionation kit (SC-003, Inventibiotech, MN, USA).