

Anti-POM121 antibody (1170-1250 C-Term) (STJ95184)

STJ95184

GENERAL INFORMATION

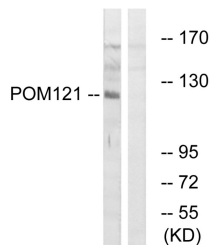
Product Type	Primary antibodies
Short Description	Rabbit polyclonal antibody anti-Nuclear Envelope Pore Membrane Protein Pom 121 and Nuclear Envelope Pore Membrane Protein Pom 121 and Nuclear Envelope Pore Membrane Protein Pom 121 (1170-1250 C-Term) is suitable for use in Western Blot, Immunohistochem
Applications	WB, IHC-P, IF-P, ELISA
Host/Source	Rabbit
Reactivity	Human, Mouse, Rat

PRODUCT PROPERTIES

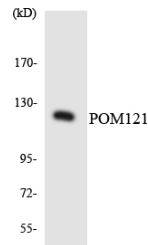
Clonality	Polyclonal
Clone ID	
Concentration	1 mg/mL
Conjugation	Unconjugated
Purification	The antibody was affinity-purified from rabbit anti-serum by affinity-chromatography.
Dilution Range	WB 1:500-1:2000 IHC 1:100-1:300 ELISA 1:40000
Formulation	PBS, 50% Glycerol, 0.5% BSA and 0.02% Sodium Azide.
Isotype	IgG
Storage Instruction	Store at -20°C for up to 1 year from the date of receipt, and avoid repeat freeze-thaw cycles.

TARGET INFORMATION

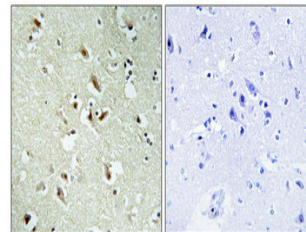
Gene ID	9883
Gene Symbol	POM121
Uniprot ID	P121A_HUMAN
Immunogen	The antiserum was produced against synthesized peptide derived from human POM121 at amino acid range 1197-1246
Immunogen Region	1170-1250 C-Term
Specificity	POM121 polyclonal antibody (Nuclear Envelope Pore Membrane Protein Pom 121 and Nuclear Envelope Pore Membrane Protein Pom 121 and Nuclear Envelope Pore Membrane Protein Pom 121) binds to endogenous Nuclear Envelope Pore Membrane Protein Pom 121 and N
Immunogen Sequence	



Western blot analysis of lysates from K562 cells, using POM121 Antibody. The lane on the right is blocked with the synthesized peptide.



Western blot analysis of the lysates from HUVEC cells using POM121 antibody.



Immunohistochemical analysis of paraffin-embedded Human brain. Antibody was diluted at 1:100 (4°C overnight). High-pressure and temperature Tris-EDTA, pH8.0 was used for antigen retrieval. Negative control (right) obtained from antigen retrieval. Negative control (right) obtained from antibody was pre-absorbed by immunogen peptide.

This product is suitable for in-vitro studies under the RESEARCH USE ONLY [RUO] licence. This product must not be used as for diagnostic or other medical purposes.
St John's Laboratory Ltd, Knowledge Dock Business Centre, University Way, London, E16 2RD | Tel: 0208 223 3081