

Anti-POLR3D antibody (250-330 C-Term) (STJ95181)

STJ95181

GENERAL INFORMATION

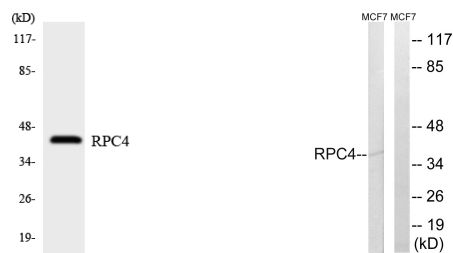
Product Type	Primary antibodies
Short Description	Rabbit polyclonal antibody anti-Dna-Directed Rna Polymerase Iii Subunit Rpc4 (250-330 C-Term) is suitable for use in Western Blot and ELISA research applications.
Applications	WB, ELISA
Host/Source	Rabbit
Reactivity	Human, Mouse

PRODUCT PROPERTIES

Clonality	Polyclonal
Clone ID	
Concentration	1 mg/mL
Conjugation	Unconjugated
Purification	The antibody was affinity-purified from rabbit anti-serum by affinity-chromatography.
Dilution Range	WB 1:500-1:2000 ELISA 1:40000
Formulation	PBS, 50% Glycerol, 0.5% BSA and 0.02% Sodium Azide.
Isotype	IgG
Storage Instruction	Store at -20°C for up to 1 year from the date of receipt, and avoid repeat freeze-thaw cycles.

TARGET INFORMATION

Gene ID	661
Gene Symbol	POLR3D
Uniprot ID	RPC4_HUMAN
Immunogen	The antiserum was produced against synthesized peptide derived from human RPC4 at amino acid range 281-330
Immunogen Region	250-330 C-Term
Specificity	POLR3D polyclonal antibody (Dna-Directed Rna Polymerase Iii Subunit Rpc4) binds to endogenous Dna-Directed Rna Polymerase Iii Subunit Rpc4 at the amino acid region 250-330 C-Term.
Immunogen Sequence	



Western blot analysis of the lysates from HepG2 cells using RPC4 antibody.

Western blot analysis of lysates from MCF-7 cells, using RPC4 Antibody. The lane on the right is blocked with the synthesized peptide.

This product is suitable for in-vitro studies under the RESEARCH USE ONLY [RUO] licence. This product must not be used as for diagnostic or other medical purposes.
St John's Laboratory Ltd, Knowledge Dock Business Centre, University Way, London, E16 2RD | Tel: 0208 223 3081