

Anti-POLR3C antibody (160-240 Internal) (STJ95180)

STJ95180

GENERAL INFORMATION

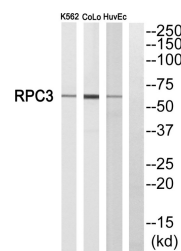
Product Type	Primary antibodies
Short Description	Rabbit polyclonal antibody anti-Dna-Directed Rna Polymerase Iii Subunit Rpc3 (160-240 Internal) is suitable for use in Western Blot and ELISA research applications.
Applications	WB, ELISA
Host/Source	Rabbit
Reactivity	Human, Rat, Mouse

PRODUCT PROPERTIES

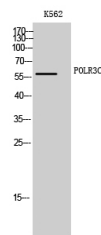
Clonality	Polyclonal
Clone ID	
Concentration	1 mg/mL
Conjugation	Unconjugated
Purification	The antibody was affinity-purified from rabbit anti-serum by affinity-chromatography.
Dilution Range	WB 1:500-1:2000 ELISA 1:40000
Formulation	PBS, 50% Glycerol, 0.5% BSA and 0.02% Sodium Azide.
Isotype	IgG
Storage Instruction	Store at -20°C for up to 1 year from the date of receipt, and avoid repeat freeze-thaw cycles.

TARGET INFORMATION

Gene ID	10623
Gene Symbol	POLR3C
Uniprot ID	RPC3_HUMAN
Immunogen	The antiserum was produced against synthesized peptide derived from human RPC3 at amino acid range 191-240
Immunogen Region	160-240 Internal
Specificity	POLR3C polyclonal antibody (Dna-Directed Rna Polymerase Iii Subunit Rpc3) binds to endogenous Dna-Directed Rna Polymerase Iii Subunit Rpc3 at the amino acid region 160-240 Internal.
Immunogen Sequence	



Western blot analysis of RPC3 Antibody. The lane on the right is blocked with the RPC3 peptide.



Western blot analysis of K562 cells using POLR3C Polyclonal Antibody cells nucleus extracted by Minute™ Cytoplasmic and Nuclear Fractionation kit (SC-003, Inventibiotech, MN, USA).

This product is suitable for in-vitro studies under the RESEARCH USE ONLY [RUO] licence. This product must not be used as for diagnostic or other medical purposes.
St John's Laboratory Ltd, Knowledge Dock Business Centre, University Way, London, E16 2RD | Tel: 0208 223 3081