

Anti-POLDIP3 antibody (320-400 C-Term) (STJ95174)

STJ95174

GENERAL INFORMATION

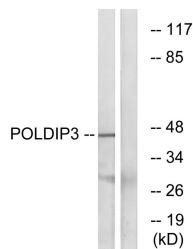
Product Type	Primary antibodies
Short Description	Rabbit polyclonal antibody anti-Polymerase Delta-Interacting Protein 3 (320-400 C-Term) is suitable for use in Western Blot, Immunohistochemistry, Immunofluorescence and ELISA research applications.
Applications	WB, IHC-P, IF-P, ELISA
Host/Source	Rabbit
Reactivity	Human, Rat, Mouse

PRODUCT PROPERTIES

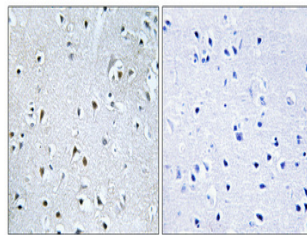
Clonality	Polyclonal
Clone ID	
Concentration	1 mg/mL
Conjugation	Unconjugated
Purification	The antibody was affinity-purified from rabbit anti-serum by affinity-chromatography.
Dilution Range	WB 1:500-1:2000 IHC 1:100-1:300 ELISA 1:40000
Formulation	PBS, 50% Glycerol, 0.5% BSA and 0.02% Sodium Azide.
Isotype	IgG
Storage Instruction	Store at 20°C for up to 1 year from the date of receipt, and avoid repeat freeze-thaw cycles.

TARGET INFORMATION

Gene ID	84271
Gene Symbol	POLDIP3
Uniprot ID	PDIIP3_HUMAN
Immunogen	The antiserum was produced against synthesized peptide derived from human POLDIP3 at amino acid range 348-397
Immunogen Region	320-400 C-Term
Specificity	POLDIP3 polyclonal antibody (Polymerase Delta-Interacting Protein 3) binds to endogenous Polymerase Delta-Interacting Protein 3 at the amino acid region 320-400 C-Term.
Immunogen Sequence	



Western blot analysis of lysates from RAW264.7 cells, using POLDIP3 Antibody. The lane on the right is blocked with the synthesized peptide.



Immunohistochemical analysis of paraffin-embedded Human brain. Antibody was diluted at 1:100 (4°C overnight). High-pressure and temperature Tris-EDTA, pH8.0 was used for antigen retrieval. Negative control (right) obtained from antibody was pre-absorbed by immunogen peptide.

This product is suitable for in-vitro studies under the RESEARCH USE ONLY [RUO] licence. This product must not be used as for diagnostic or other medical purposes.
St John's Laboratory Ltd, Knowledge Dock Business Centre, University Way, London, E16 2RD | Tel: 0208 223 3081