

## Anti-PNPT1 antibody (540-620 C-Term) (STJ95172)

STJ95172

### GENERAL INFORMATION

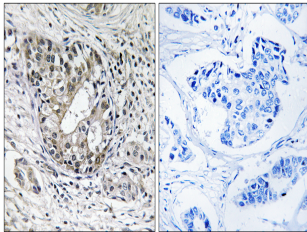
<b>Product Type</b>	Primary antibodies
<b>Short Description</b>	Rabbit polyclonal antibody anti-Polyribonucleotide Nucleotidyltransferase 1-Mitochondrial (540-620 C-Term) is suitable for use in Western Blot, Immunohistochemistry, Immunofluorescence and ELISA research applications.
<b>Applications</b>	WB, IHC-P, IF-P, ELISA
<b>Host/Source</b>	Rabbit
<b>Reactivity</b>	Human, Mouse

### PRODUCT PROPERTIES

<b>Clonality</b>	Polyclonal
<b>Clone ID</b>	
<b>Concentration</b>	1 mg/mL
<b>Conjugation</b>	Unconjugated
<b>Purification</b>	The antibody was affinity-purified from rabbit anti-serum by affinity-chromatography.
<b>Dilution Range</b>	WB 1:500-1:2000 IHC 1:100-1:300 ELISA 1:20000
<b>Formulation</b>	PBS, 50% Glycerol, 0.5% BSA and 0.02% Sodium Azide.
<b>Isotype</b>	IgG
<b>Storage Instruction</b>	Store at -20°C for up to 1 year from the date of receipt, and avoid repeat freeze-thaw cycles.

### TARGET INFORMATION

<b>Gene ID</b>	87178
<b>Gene Symbol</b>	PNPT1
<b>Uniprot ID</b>	PNPT1_HUMAN
<b>Immunogen</b>	The antiserum was produced against synthesized peptide derived from human PNPT1 at amino acid range 570-619
<b>Immunogen Region</b>	540-620 C-Term
<b>Specificity</b>	PNPT1 polyclonal antibody (Polyribonucleotide Nucleotidyltransferase 1-Mitochondrial) binds to endogenous Polyribonucleotide Nucleotidyltransferase 1-Mitochondrial at the amino acid region 540-620 C-Term.
<b>Immunogen Sequence</b>	



Immunohistochemistry analysis of paraffin-embedded human breast carcinoma tissue, using PNPT1 Antibody. The picture on the right is blocked with the synthesized peptide.



Western blot analysis of various cells using PNPase Polyclonal Antibody diluted at 1: 1000