

## Anti-PLC Gamma antibody (STJ95158)

STJ95158

### GENERAL INFORMATION

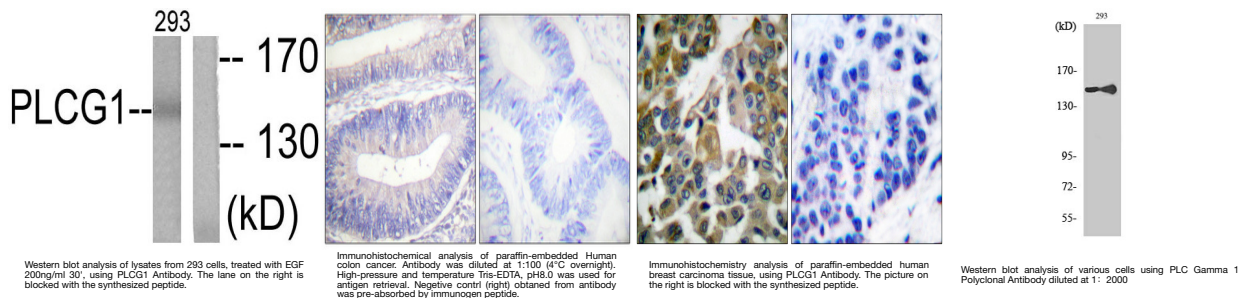
<b>Product Type</b>	Primary antibodies
<b>Short Description</b>	Rabbit polyclonal anti-PLC Gamma antibody is suitable for use in Western Blot, Immunohistochemistry and ELISA.
<b>Background</b>	
<b>Applications</b>	WB, IHC-P, ELISA
<b>Host/Source</b>	Rabbit
<b>Reactivity</b>	Human, Mouse, Rat

### PRODUCT PROPERTIES

<b>Clonality</b>	Polyclonal
<b>Clone ID</b>	
<b>Concentration</b>	1 mg/ml
<b>Conjugation</b>	Unconjugated
<b>Purification</b>	The antibody was affinity-purified from rabbit antiserum by affinity-chromatography using an epitope-specific immunogen.
<b>Dilution Range</b>	WB 1:500-1:2000 IHC 1:100-1:300 ELISA 1:10000
<b>Formulation</b>	Liquid in PBS containing 50% glycerol, 0.5% BSA and 0.02% sodium azide.
<b>Isotype</b>	IgG
<b>Storage Instruction</b>	Store at -20°C, and avoid repeat freeze-thaw cycles.

### TARGET INFORMATION

<b>Gene ID</b>	5335
<b>Gene Symbol</b>	PLCG1
<b>Uniprot ID</b>	PLCG1_HUMAN
<b>Immunogen</b>	Synthesized peptide derived from human PLC gamma1 around the non-phosphorylation site of Y783.
<b>Immunogen Region</b>	720-800 aa
<b>Specificity</b>	PLC gamma 1 polyclonal antibody detects endogenous levels of PLC gamma 1 protein.
<b>Immunogen Sequence</b>	



This product is suitable for in-vitro studies under the RESEARCH USE ONLY [RUO] licence. This product must not be used as for diagnostic or other medical purposes.  
 St John's Laboratory Ltd, Knowledge Dock Business Centre, University Way, London, E16 2RD | Tel: 0208 223 3081 | Fax: 0207 681 2580