

Anti-PLG antibody (Internal) (STJ95151)

STJ95151

GENERAL INFORMATION

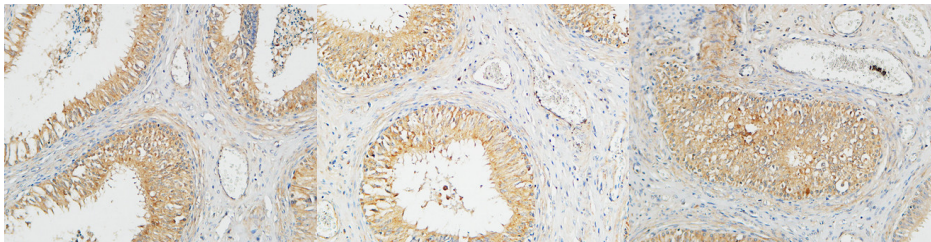
Product Type	Primary antibodies
Short Description	Rabbit polyclonal antibody anti-Plasminogen Cleaved Into-Plasmin Heavy Chain A-Activation Peptide-Angiostatin-Plasmin Heavy Chain A-Short Form-Plasmin Light Chain B (Internal) is suitable for use in Western Blot, Immunohistochemistry, Immunofluoresce
Applications	WB, IHC-P, IF-P, ELISA
Host/Source	Rabbit
Reactivity	Human, Rat, Mouse

PRODUCT PROPERTIES

Clonality	Polyclonal
Clone ID	
Concentration	1 mg/mL
Conjugation	Unconjugated
Purification	The antibody was affinity-purified from rabbit anti-serum by affinity-chromatography.
Dilution	IHC 100-300
Range	WB 1:500-1:2000 ELISA 1:40000
Formulation	PBS, 50% Glycerol, 0.5% BSA and 0.02% Sodium Azide.
Isotype	IgG
Storage Instruction	Store at -20°C for up to 1 year from the date of receipt, and avoid repeat freeze-thaw cycles.

TARGET INFORMATION

Gene ID	5340
Gene Symbol	PLG
Uniprot ID	PLMN_HUMAN
Immunogen	Synthesized peptide derived from the Internal region of human Plasminogen.
Immunogen Region	Internal
Specificity	PLG polyclonal antibody (Plasminogen Cleaved Into-Plasmin Heavy Chain A-Activation Peptide-Angiostatin-Plasmin Heavy Chain A-Short Form-Plasmin Light Chain B) binds to endogenous Plasminogen Cleaved Into-Plasmin Heavy Chain A-Activation Peptide-Angio
Immunogen Sequence	



Immunohistochemical analysis of paraffin-embedded Human testis. 1. Antibody was diluted at 1:200 (4°C overnight). 2. High-pressure and temperature EDTA, pH8.0 was used for antigen retrieval. 3. Secondary antibody was diluted at 1:200 (room temperature, 30min).

Immunohistochemical analysis of paraffin-embedded Human testis. 1. Antibody was diluted at 1:200 (4°C overnight). 2. High-pressure and temperature EDTA, pH8.0 was used for antigen retrieval. 3. Secondary antibody was diluted at 1:200 (room temperature, 30min).

Immunohistochemical analysis of paraffin-embedded Human testis. 1. Antibody was diluted at 1:200 (4°C overnight). 2. High-pressure and temperature EDTA, pH8.0 was used for antigen retrieval. 3. Secondary antibody was diluted at 1:200 (room temperature, 30min).

This product is suitable for in-vitro studies under the RESEARCH USE ONLY [RUO] licence. This product must not be used as for diagnostic or other medical purposes.
St John's Laboratory Ltd, Knowledge Dock Business Centre, University Way, London, E16 2RD | Tel: 0208 223 3081