

Anti-PKP4 antibody (160-240 Internal) (STJ95150)

STJ95150

GENERAL INFORMATION

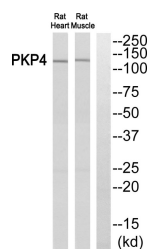
Product Type	Primary antibodies
Short Description	Rabbit polyclonal antibody anti-Plakophilin-4 (160-240 Internal) is suitable for use in Western Blot, Immunohistochemistry, Immunofluorescence and ELISA research applications.
Applications	WB, IHC-P, IF-P, ELISA
Host/Source	Rabbit
Reactivity	Human, Mouse

PRODUCT PROPERTIES

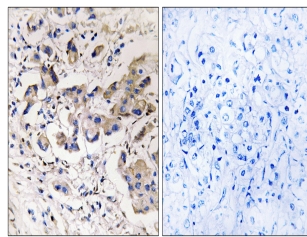
Clonality	Polyclonal
Clone ID	
Concentration	1 mg/mL
Conjugation	Unconjugated
Purification	The antibody was affinity-purified from rabbit anti-serum by affinity-chromatography.
Dilution Range	WB 1:500-1:2000 IHC 1:100-1:300 ELISA 1:5000
Formulation	PBS, 50% Glycerol, 0.5% BSA and 0.02% Sodium Azide.
Isotype	IgG
Storage Instruction	Store at -20°C for up to 1 year from the date of receipt, and avoid repeat freeze-thaw cycles.

TARGET INFORMATION

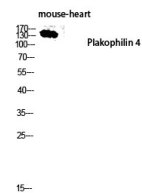
Gene ID	8502
Gene Symbol	PKP4
Uniprot ID	PKP4_HUMAN
Immunogen	The antiserum was produced against synthesized peptide derived from human PKP4 at amino acid range 185-234
Immunogen Region	160-240 Internal
Specificity	PKP4 polyclonal antibody (Plakophilin-4) binds to endogenous Plakophilin-4 at the amino acid region 160-240 Internal.
Immunogen Sequence	



Western blot analysis of PKP4 Antibody. The lane on the right is blocked with the PKP4 peptide.



Immunohistochemistry analysis of paraffin-embedded human breast carcinoma, using PKP4 Antibody. The lane on the right is blocked with the PKP4 peptide.



Western blot analysis of mouse-heart lysis using Plakophilin 4 antibody. Antibody was diluted at 1:2000