

Anti-PKP2 antibody (610-690 C-Term) (STJ95149)

STJ95149

GENERAL INFORMATION

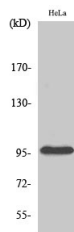
| | |
|--------------------------|---|
| Product Type | Primary antibodies |
| Short Description | Rabbit polyclonal antibody anti-Plakophilin-2 (610-690 C-Term) is suitable for use in Western Blot and ELISA research applications. |
| Applications | WB, ELISA |
| Host/Source | Rabbit |
| Reactivity | Human, Rat |

PRODUCT PROPERTIES

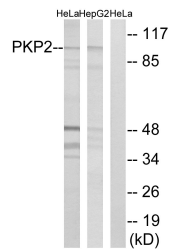
| | |
|----------------------------|--|
| Clonality | Polyclonal |
| Clone ID | |
| Concentration | 1 mg/mL |
| Conjugation | Unconjugated |
| Purification | The antibody was affinity-purified from rabbit anti-serum by affinity-chromatography. |
| Dilution Range | WB 1:500-1:2000 ELISA 1:20000 |
| Formulation | PBS, 50% Glycerol, 0.5% BSA and 0.02% Sodium Azide. |
| Isotype | IgG |
| Storage Instruction | Store at -20°C for up to 1 year from the date of receipt, and avoid repeat freeze-thaw cycles. |

TARGET INFORMATION

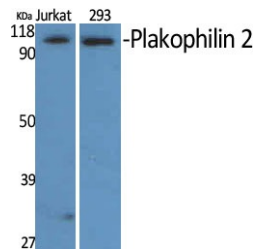
| | |
|---------------------------|---|
| Gene ID | 5318 |
| Gene Symbol | PKP2 |
| Uniprot ID | PKP2_HUMAN |
| Immunogen | The antiserum was produced against synthesized peptide derived from human PKP2 at amino acid range 632-681 |
| Immunogen Region | 610-690 C-Term |
| Specificity | PKP2 polyclonal antibody (Plakophilin-2) binds to endogenous Plakophilin-2 at the amino acid region 610-690 C-Term. |
| Immunogen Sequence | |



Western blot analysis of HepG2 cells using Plakophilin 2 Polyclonal Antibody diluted at 1:500 cells nucleus extracted by Minute™ Cytoplasmic and Nuclear Fractionation kit (SC-003, Inventibiotech, MN, USA).



Western blot analysis of lysates from HeLa and HepG2 cells, using PKP2 Antibody. The lane on the right is blocked with the synthesized peptide.



Western blot analysis of various cells using Plakophilin 2 Polyclonal Antibody diluted at 1:500 cells nucleus extracted by Minute™ Cytoplasmic and Nuclear Fractionation kit (SC-003, Inventibiotech, MN, USA).

This product is suitable for in-vitro studies under the RESEARCH USE ONLY [RUO] licence. This product must not be used as for diagnostic or other medical purposes.
St John's Laboratory Ltd, Knowledge Dock Business Centre, University Way, London, E16 2RD | Tel: 0208 223 3081