

Anti-PROKR1 antibody (30-110 N-Term) (STJ95147)

STJ95147

GENERAL INFORMATION

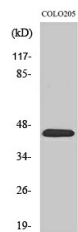
Product Type	Primary antibodies
Short Description	Rabbit polyclonal antibody anti-Prokineticin Receptor 1 (30-110 N-Term) is suitable for use in Western Blot, Immunofluorescence, Immunocytochemistry and ELISA research applications.
Applications	WB, IF, ICC, ELISA
Host/Source	Rabbit
Reactivity	Human, Mouse, Rat

PRODUCT PROPERTIES

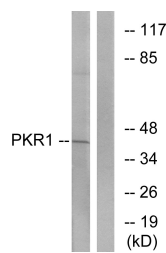
Clonality	Polyclonal
Clone ID	
Concentration	1 mg/mL
Conjugation	Unconjugated
Purification	The antibody was affinity-purified from rabbit anti-serum by affinity-chromatography.
Dilution Range	WB 1:500-1:2000 IF 1:200-1:1000 ELISA 1:20000
Formulation	PBS, 50% Glycerol, 0.5% BSA and 0.02% Sodium Azide.
Isotype	IgG
Storage Instruction	Store at -20°C for up to 1 year from the date of receipt, and avoid repeat freeze-thaw cycles.

TARGET INFORMATION

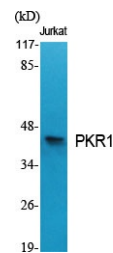
Gene ID	10887
Gene Symbol	PROKR1
Uniprot ID	PKR1_HUMAN
Immunogen	The antiserum was produced against synthesized peptide derived from human PKR1 at amino acid range 19-68
Region	30-110 N-Term
Specificity	PROKR1 polyclonal antibody (Prokineticin Receptor 1) binds to endogenous Prokineticin Receptor 1 at the amino acid region 30-110 N-Term.
Immunogen Sequence	



Western blot analysis of COLO205 cells using PKR1 Polyclonal Antibody



Western blot analysis of lysates from COLO cells, using PKR1 Antibody. The lane on the right is blocked with the synthesized peptide.



Western blot analysis of various cells using PKR1 Polyclonal Antibody

This product is suitable for in-vitro studies under the RESEARCH USE ONLY [RUO] licence. This product must not be used as for diagnostic or other medical purposes.
St John's Laboratory Ltd, Knowledge Dock Business Centre, University Way, London, E16 2RD | Tel: 0208 223 3081