

Anti-PKD1/2/3 antibody (680-760) (STJ95137)

STJ95137

GENERAL INFORMATION

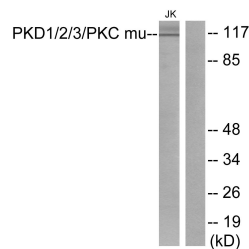
Product Type	Primary antibodies
Short Description	Rabbit polyclonal antibody anti-Serine/threonine-protein kinase D1 and Serine/threonine-protein kinase D2 and Serine/threonine-protein kinase D3 (680-760) is suitable for use in Western Blot, Immunofluorescence, Immunocytochemistry and ELISA research
Applications	WB, IF, ICC, ELISA
Host/Source	Rabbit
Reactivity	Human, Mouse, Rat

PRODUCT PROPERTIES

Clonality	Polyclonal
Clone ID	
Concentration	1 mg/mL
Conjugation	Unconjugated
Purification	The antibody was affinity-purified from rabbit anti-serum by affinity-chromatography.
Dilution Range	WB 1:500-1:2000 ELISA 1:5000
Formulation	PBS, 50% Glycerol, 0.5% BSA and 0.02% Sodium Azide.
Isotype	IgG
Storage Instruction	Store at -20°C for up to 1 year from the date of receipt, and avoid repeat freeze-thaw cycles.

TARGET INFORMATION

Gene ID	23683 25865 5587 PRKD3 PRKD2 KPCD3_HUMAN KPCD2_HUMAN KPCD1_HUMAN
Immunogen	The antiserum was produced against synthesized peptide derived from human PKD1/2/3/PKC mu at amino acid range 706-755
Immunogen Region	680-760
Specificity	PKD1/2/3 polyclonal antibody (Serine/threonine-protein kinase D1 and Serine/threonine-protein kinase D2 and Serine/threonine-protein kinase D3) binds to endogenous Serine/threonine-protein kinase D1 and Serine/threonine-protein kinase D2 and Serine/t
Immunogen Sequence	



Western blot analysis of lysates from Jurkat cells, using PKD1/2/3/PKC mu Antibody. The lane on the right is blocked with the synthesized peptide.