

Anti-PRKCQ antibody (610-690) (STJ95133)

STJ95133

GENERAL INFORMATION

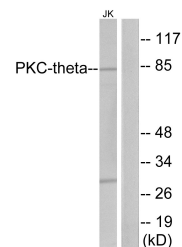
Product Type	Primary antibodies
Short Description	Rabbit polyclonal antibody anti-Protein Kinase C Theta Type (610-690) is suitable for use in Western Blot, Immunohistochemistry, Immunofluorescence, Immunocytochemistry and ELISA research applications.
Applications	WB, IHC-P, IF, ICC, ELISA
Host/Source	Rabbit
Reactivity	Human, Mouse, Rat

PRODUCT PROPERTIES

Clonality	Polyclonal
Clone ID	
Concentration	1 mg/mL
Conjugation	Unconjugated
Purification	The antibody was affinity-purified from rabbit anti-serum by affinity-chromatography.
Dilution Range	WB 1:500-1:2000 IHC 1:100-1:300 IF 1:200-1:1000 ELISA 1:20000
Formulation	PBS, 50% Glycerol, 0.5% BSA and 0.02% Sodium Azide.
Isotype	IgG
Storage Instruction	Store at -20°C for up to 1 year from the date of receipt, and avoid repeat freeze-thaw cycles.

TARGET INFORMATION

Gene ID	5588
Gene Symbol	PRKCQ
Uniprot ID	KPCT_HUMAN
Immunogen	The antiserum was produced against synthesized peptide derived from human PKC theta at amino acid range 643-692
Immunogen Region	610-690
Specificity	PRKCQ polyclonal antibody (Protein Kinase C Theta Type) binds to endogenous Protein Kinase C Theta Type at the amino acid region 610-690.
Immunogen Sequence	



Western blot analysis of lysates from Jurkat cells, treated with PMA 200nM 30', using PKC theta Antibody. The lane on the right is blocked with the synthesized peptide.

This product is suitable for in-vitro studies under the RESEARCH USE ONLY [RUO] licence. This product must not be used as for diagnostic or other medical purposes.
St John's Laboratory Ltd, Knowledge Dock Business Centre, University Way, London, E16 2RD | Tel: 0208 223 3081