

Anti-PRKCQ antibody (480-560) (STJ95132)

STJ95132

GENERAL INFORMATION

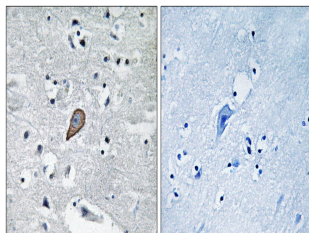
Product Type	Primary antibodies
Short Description	Rabbit polyclonal antibody anti-Protein Kinase C Theta Type (480-560) is suitable for use in Western Blot, Immunohistochemistry, Immunofluorescence and ELISA research applications.
Applications	WB, IHC-P, IF-P, ELISA
Host/Source	Rabbit
Reactivity	Human, Mouse, Rat

PRODUCT PROPERTIES

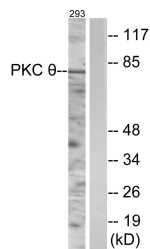
Clonality	Polyclonal
Clone ID	
Concentration	1 mg/mL
Conjugation	Unconjugated
Purification	The antibody was affinity-purified from rabbit anti-serum by affinity-chromatography.
Dilution Range	WB 1:500-1:2000 IHC 1:100-1:300 ELISA 1:20000
Formulation	PBS, 50% Glycerol, 0.5% BSA and 0.02% Sodium Azide.
Isotype	IgG
Storage Instruction	Store at -20°C for up to 1 year from the date of receipt, and avoid repeat freeze-thaw cycles.

TARGET INFORMATION

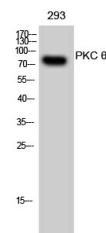
Gene ID	5588
Gene Symbol	PRKCQ
Uniprot ID	KPCT_HUMAN
Immunogen	The antiserum was produced against synthesized peptide derived from human PKC theta at amino acid range 504-553
Immunogen Region	480-560
Specificity	PRKCQ polyclonal antibody (Protein Kinase C Theta Type) binds to endogenous Protein Kinase C Theta Type at the amino acid region 480-560.
Immunogen Sequence	



Immunohistochemistry analysis of paraffin-embedded human brain carcinoma tissue, using PKC theta Antibody. The picture on the right is blocked with the synthesized peptide.



Western blot analysis of lysates from 293 cells, using PKC theta Antibody. The lane on the right is blocked with the synthesized peptide.



Western blot analysis of 293 cells using PKC Theta Polyclonal Antibody