

Anti-PRKCE antibody (670-750) (STJ95128)

STJ95128

GENERAL INFORMATION

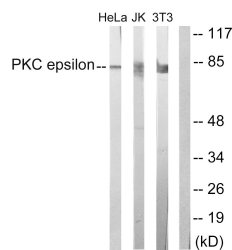
Product Type	Primary antibodies
Short Description	Rabbit polyclonal antibody anti-Protein Kinase C Epsilon Type (670-750) is suitable for use in Western Blot and ELISA research applications.
Applications	WB, ELISA
Host/Source	Rabbit
Reactivity	Human, Mouse, Rat

PRODUCT PROPERTIES

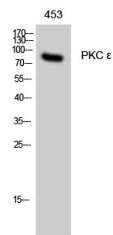
Clonality	Polyclonal
Clone ID	
Concentration	1 mg/mL
Conjugation	Unconjugated
Purification	The antibody was affinity-purified from rabbit anti-serum by affinity-chromatography.
Dilution Range	WB 1:500-1:2000 ELISA 1:5000
Formulation	PBS, 50% Glycerol, 0.5% BSA and 0.02% Sodium Azide.
Isotype	IgG
Storage	Store at -20°C for up to 1 year from the date of receipt, and avoid repeat freeze-thaw cycles.
Instruction	

TARGET INFORMATION

Gene ID	5581
Gene Symbol	PRKCE
Uniprot ID	KPCE_HUMAN
Immunogen	The antiserum was produced against synthesized peptide derived from human PKC epsilon at amino acid range 688-737
Immunogen Region	670-750
Specificity	PRKCE polyclonal antibody (Protein Kinase C Epsilon Type) binds to endogenous Protein Kinase C Epsilon Type at the amino acid region 670-750.
Immunogen Sequence	



Western blot analysis of lysates from HeLa, Jurkat, and 3T3 cells, treated with PMA 125ng/ml 30', using PKC epsilon Antibody. The lane on the right is blocked with the synthesized peptide.



Western blot analysis of 453 cells using PKC Epsilon Polyclonal Antibody diluted at 1: 500