

Anti-PKC antibody (600-680) (STJ95117)

STJ95117

GENERAL INFORMATION

Product Type	Primary antibodies
Short Description	Rabbit polyclonal antibody anti-Protein kinase C alpha type and Protein kinase C beta type and Protein kinase C delta type and Protein kinase C epsilon type and Protein kinase C gamma type and Protein kinase C eta type and Protein kinase C theta type
Applications	WB, IHC-P, IF, ICC, ELISA
Host/Source	Rabbit
Reactivity	Human, Mouse, Rat

PRODUCT PROPERTIES

Clonality	Polyclonal
Clone ID	
Concentration	1 mg/mL
Conjugation	Unconjugated
Purification	The antibody was affinity-purified from rabbit anti-serum by affinity-chromatography.
Dilution Range	WB 1:500-1:2000 IHC 1:100-1:300 IF 1:200-1:1000 ELISA 1:5000
Formulation	PBS, 50% Glycerol, 0.5% BSA and 0.02% Sodium Azide.
Isotype	IgG
Storage Instruction	Store at -20°C for up to 1 year from the date of receipt, and avoid repeat freeze-thaw cycles.

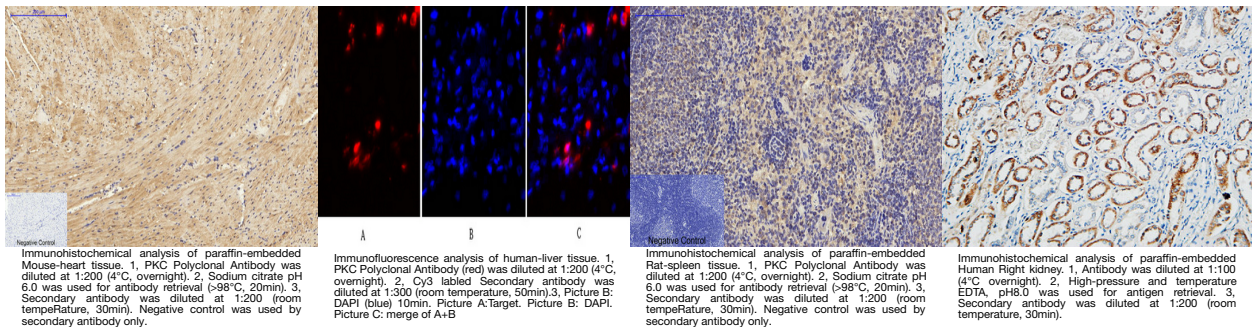
TARGET INFORMATION

Gene ID [5582](#)
[5579](#)
[5580](#)
[PRKCG](#)
[PRKCB](#)
[KPCG_HUMAN](#)
[KPCB_HUMAN](#)
[KPCD_HUMAN](#)
[<](#)

Immunogen The antiserum was produced against synthesized peptide derived from human PKC at amino acid range 623-672
Immunogen Region 600-680

Specificity PKC polyclonal antibody (Protein kinase C alpha type and Protein kinase C beta type and Protein kinase C delta type and Protein kinase C epsilon type and Protein kinase C gamma type and Protein kinase C eta type and Protein kinase C theta type and Pr

Immunogen Sequence



This product is suitable for in-vitro studies under the RESEARCH USE ONLY [RUO] licence. This product must not be used as for diagnostic or other medical purposes.
 St John's Laboratory Ltd, Knowledge Dock Business Centre, University Way, London, E16 2RD | Tel: 0208 223 3081